



## DTCC Common Guide

October 2020 – Version 5.0

This document guides you through the setup of common reporting data shared by DTCC DerivSERV (DSMatch) and DTCC GTR sub-modules.

*Online help is provided from the individual windows referred to in this document.*

Revision date	Edition	Comments
December 2012	First edition	First edition for version 1.1.1 of the module
January 2013	2nd edition	Update with new ReportingData field: CounterpartyNonDisclosure
June 2013	3rd edition	Third edition for Version 1.5.0.1 of the module - Update the list of Trade Keywords, in particular for NovationFeeReportingParty. - New possible value in the Incoming Flag: "UPDATE" - Installation changes
January 2014	4th edition	Important updates due to EMIR introduction: List of reporting attributes / trade keywords completely reviewed.
January 2014	5 <sup>th</sup> edition	New tool "ReportingAttributes.xml": simplified way to setup the ReportingData(-Flags) domains.
December 2014	6 <sup>th</sup> edition	New reporting attributes added in the Section 2 of this document (to support more Conditional fields): Counterparty-ExecutionAgent Counterparty-SettlementAgent Counterparty-Desk Counterparty-Trader ProcessingOrg-ExecutionAgent ProcessingOrg-SettlementAgent AdditionalRepository1 AdditionalRepository2 AdditionalRepository3 TerminatedByCompression (required for new ESMA validation rules)
March 2015	7 <sup>th</sup> edition	Adding a parameter -executeSQLCompliant to the application DTCCReportingAttributeSetup
April 2015	8 <sup>th</sup> edition	Updates for version 2.10 of the DTCC module: - Add new reporting attributes for Canadian reporting - Review of the installation procedure for latest versions: In particular, new Scheduled Task DTCC_REPORTING_ATTRIBUTES_SETUP used in Calypso V14 instead of the application DTCCReportingAttributeSetup (which was available in the AppStarter).
September 2015	9 <sup>th</sup> edition	Updates for version 2.12 of the DTCC module: - Add new reporting attributes for MAS and HKMA reporting
May 2016	10 <sup>th</sup> edition	Update for version 3.1 of the DTCC module: - dedicated tables for reporting information - improved setup for reporting attributes

September 2017	11 <sup>th</sup> edition	Updates for version 2.15 and 3.1 of the DTCC module: - Add new reporting attributes for Canadian reporting (covers 10 additional jurisdictions)
April 2018	12 <sup>th</sup> edition	Update applicable to version 3.4 of the DTCC module - Add new reporting attributes for Australian (ASIC) reporting
September 2019	13 <sup>th</sup> edition	Update applicable to version 3.6 of the DTCC module - Add new reporting attributes for United Kingdom (FCA) reporting
October 2020	14 <sup>th</sup> edition	Update applicable to version 3.10 of the DTCC module - new reporting attributes introduced because of the North America (CFTC_CANADA) re-architecture ClearingSwapUSIPrefix ClearingSwapUSIValue ClearingSwapUTIPrefix ClearingSwapUTIValue ClearingSwapPriorUSIPrefix ClearingSwapPriorUSIValue ClearingSwapPriorUTIPrefix ClearingSwapPriorUTIValue  - Additional new reporting attributes applicable to all jurisdictions:  GTR-Version UniqueTradeId-Leg2

## Contents

<b>Section 1. Introduction .....</b>	<b>4</b>
1.1 DTCC remote service .....	4
1.2 Technical refactoring of reporting persistence .....	4
1.3 Improved setup for reporting attributes.....	4
<b>Section 2. Installation .....</b>	<b>5</b>
2.1 Deploying DTCC Remote Service .....	5
2.2 Installing DTCC Common Schemas .....	5
2.3 Setting up Reporting Attributes.....	7
2.3.1 Reporting Attributes Migration task.....	7
2.3.2 Reporting Attribute Window.....	8
<b>Section 3. Detailing new persistence .....</b>	<b>10</b>
3.1 Database model for new persistence.....	10
3.1.1 Referential table tr_regulation.....	11
3.1.2 Referential table tr_supervisor .....	11
3.1.3 Referential table tr_le_id_source .....	12
3.1.4 Table tr_report.....	12
3.1.5 Table tr_usi_uti .....	14
3.1.6 Table tr_report_regime.....	15
3.1.7 Table tr_submission_state.....	15
3.1.8 Table tr_business_unit.....	16
3.2 Reporting information in memory .....	17
<b>Section 4. Reporting attributes .....</b>	<b>20</b>
4.1 Introduction and properties.....	20
4.2 Reporting attribute setup .....	21
4.3 List of reporting attributes .....	22
4.4 Relationship between reporting attributes and reporting tables.....	46
4.4.1 Reporting attributes related to table tr_report.....	46
4.4.2 Table tr_usi_uti reporting attributes .....	47
4.4.3 Table tr_report_regime attributes.....	49
4.4.4 Table tr_submission_state attributes.....	51

## Section 1. Introduction

This document introduces the version 3.1 of dtcc module which comes along with a set of new features:

- A dtcc remote service
- A new persistence model (enabled only for calypso 15)
- An improved setup for reporting attribute descriptions
- A GUI for editing this reporting attributes setup (available for calypso 14.3 and over)

### 1.1 DTCC remote service

In previous versions (until 2.14 included), dtcc module had no dedicated remote service. As a consequence:

- the reporting information was exclusively recorded into trade keywords
- the setup was persisted only in domain values.

The introduction of a dtcc remote service along with the version 3, allows dtcc module to handle its own tables. As a consequence, we can use dedicated tables to persist the reporting information and complex setup information (such as reporting attributes).

**Caution:** Customer using versions of calypso prior to version 14 will have to deploy the dtcc remote service. See [2.1 Deploying DTCC Remote Service](#)

### 1.2 Technical refactoring of reporting persistence

As we already stated, in previous versions, dtcc module could not save reporting information into dedicated tables.

As a work-around, the reporting information was split into basic properties called *reporting attributes*. Each reporting attribute is mapped upon a single trade keyword through a customizable mapping. In other words, a customer Bank\_A may choose to record the USI TradeId into the keyword Reporting-USITradeId, when another customer Bank\_B may choose to record it into the keyword GTR-USITradeReference.

In addition each reporting attribute conveys a set of flags that mediate its effective update upon incoming messages as well as its usage for filling outgoing submissions.

In the rest of this document, we will refer to reporting attributes (which involves the mapping and the related flags) rather than trade keywords.

When putting altogether the various regulations (Dodd-Frank, EMIR, Canada, MAS, HKMA) and the various asset classes, the number of potential reporting attributes exceeds 150. As long as the reporting is limited to OTC trading, the footprint on performances remains acceptable, but it might drastically increase whenever we start reporting listed trades.

This drove us to review our reporting information persistence. Instead of being recorded into numerous rows in the table `trade_keyword`, the reporting information will be recorded into few rows of dedicated database tables with native storage. This should provide native data storage for fields like date and timestamp, and improve performances.

To accelerate the migration process and the implementation, in memory, trade reporting information still relies on trade keywords. But the data is actually persisted into the new dedicated tables. The end of this document describes the actual implementation of the new design, the related tools and the migration process from legacy reporting to the new persistence.

**Caution:** this new persistence requires features that were introduced in calypso 15. The new persistence will be enabled only for the version 15 and further. For prior versions of calypso, reporting data keeps persisted on trade keywords.

### 1.3 Improved setup for reporting attributes

Before 3.1, dtcc module had no dedicated remote service. As a consequence, the domain values were the only way to provide the configuration of reporting attributes. As each reporting attribute configuration involves a mapping from reporting attribute to trade keyword, as well as a set of inbound and outbound flags for DerivServ (DSMatch) and GTR, maintaining the setup was cumbersome and error prone.

The new remote service allows moving the setup to a dedicated `tr_reporting_attr` table where each row stands for a given reporting attribute. A special scheduled task facilitates the migration of existing legacy setups (based on domain-values) to `tr_reporting_attr`, and a GUI enables editing the new configuration.

## Section 2. Installation

The dtcc module encompasses 2 sub-modules: DerivServ (which handles the reconciliation service of DTCC) and GTR (which is in charge of the regulation reporting – Dodd-Frank, EMIR, Canada, Hong-Kong and Singapore).

These 2 sub-modules share common code and common data. The common code is in calypso-dtcc-common jar, the common data are configured with the following files that you can find in the directory [bin/dbscripts](#) of the dtcc module delivery:

- [DTCCCommonSchemaBase.xml](#) which defines dtcc module specific tables
- [DTCCCommonSchemaData.xml](#) which allows you to configure several “domain values” and describes the “reporting attributes” used for reporting (along with default values).

### 2.1 Deploying DTCC Remote Service

Customers working with calypso installations whose version is equal or higher than 14, can skip this section. In their case, the remote service is deployed automatically.

Customer installing dtcc module 3.1 over a calypso installation whose version is prior to 14.0.0 will have to deploy manually the remote dtcc service (interface [RemoteDTCC](#), data server implementation [com.calypso.tk.service.DTCCServerImpl](#)) like any custom service (see Infrastructure documentation “[Developer’s Guide](#)” corresponding to your calypso version).

### 2.2 Installing DTCC Common Schemas

The common schemas provide all the setup required by dtcc module. They also provide a reasonable setup for reporting attributes. Customers installing dtcc module over a version of calypso prior to 14.3, must be aware that they will not have GUI for editing reporting attribute setup. Those customers might check in [DTCCCommonSchemaData.xml](#) that the reporting attribute setup matches their requirements (you will find more information about reporting attributes in the [Section 4 “Declaring Reporting Attributes”](#)).

Launch the ExecuteSQL application on [DTCCCommonSchemaData.xml](#) and check “DTCC Common” checkbox.

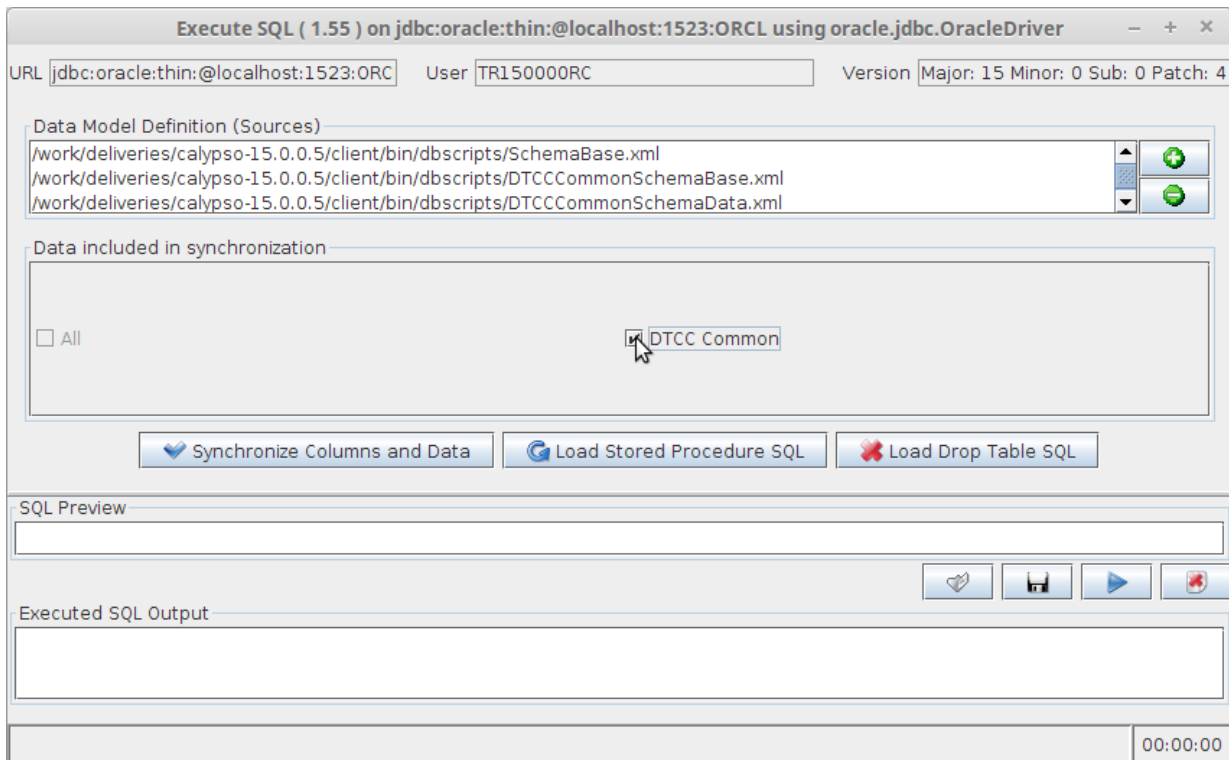


Figure 1: installing DTCC Common Schemas

This will create the following database tables:

- tr\_reporting\_attr
- tr\_reporting\_attr\_restriction
- tr\_regulation
- tr\_supervisor
- tr\_le\_id\_source
- tr\_po\_role
- tr\_report and tr\_report\_hist
- tr\_report\_regime and tr\_report\_regime\_hist
- tr\_usi\_uti and tr\_usi\_uti\_hist
- tr\_business\_unit and tr\_business\_unit\_hist
- tr\_submission\_state and tr\_submission\_state\_hist

## 2.3 Setting up Reporting Attributes

We have various scenarios depending upon the customer situation:

- First time installation
- Upgrade of a legacy dtcc module installation

For an upgrade of a previous dtcc module installation, the customer will need to keep their previous reporting attribute setup. In that case, after the installation of the common schemas, they should execute the [REPORTING\\_ATTRIBUTES\\_MIGRATION](#) task.

### 2.3.1 Reporting Attributes Migration task

This task will load in memory the old reporting attributes setup that exists in the legacy domain-values setup (domains [DTCC-GTR-ReportingData](#), [DTCC-GTR-ReportingData-Flags](#) and [DTCC-GTR-ReportingData-DSMatch-Flags](#)), and save it into the new setup (table [tr\\_reporting\\_attr](#)).

Creating this schedule task and launching it is pretty easy as it has no specific task attributes.

**Scheduled Task Definition**

Use the dialog below to define the attributes for the task to be executed. These attributes will control the behavior of the task. There are two types of attributes, general attributes which are the same across all tasks and task specific attributes. Scheduling of the task is performed using the Task Trigger Definition dialog

**Task Description**

Task Type: [REPORTING\\_ATTRIBUTES\\_MIGRATION](#)

External Reference: [REPORTING\\_ATTRIBUTES\\_MIGRATION](#)

Comments:

Description: Migrate legacy "domain-values" reporting attribute setup over the new setup

**Execution Parameters**

Attempts: 1    Retry After: 0 minutes    Expected Execution Time (SLA): 2 minutes

JVM Settings: -Xms512m -Xmx1024m -XX:MaxPermSize=256m

Log Settings: ...

**Task Notification Options**

☐ Send Emails    ☐ Publish Business Events    To User: calypso\_bo

**Common Attributes**

Save Cancel

Figure 2: task for migrating legacy reporting attribute setup

Upon successful execution, customers can control the result by:

- Calling the Reporting Attribute Window when calypso version is 14.3 or over
- Browsing the contents of the table [tr\\_reporting\\_attr](#) otherwise

## 2.3.2 Reporting Attribute Window

The Reporting Attribute Window is a GUI enabling the edition of reporting attributes setup. To enable this window in the navigator, go into **Navigator > Utilities > MainEntry Customizer**.

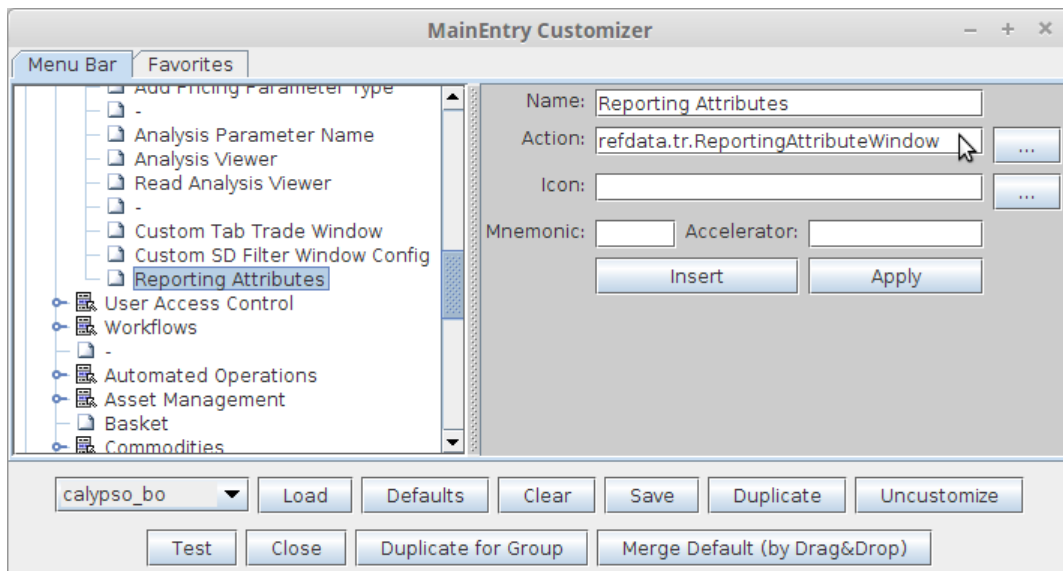


Figure 3: Adding the Reporting Attribute Window to Navigator

Customer can then start the Reporting Attribute Window.

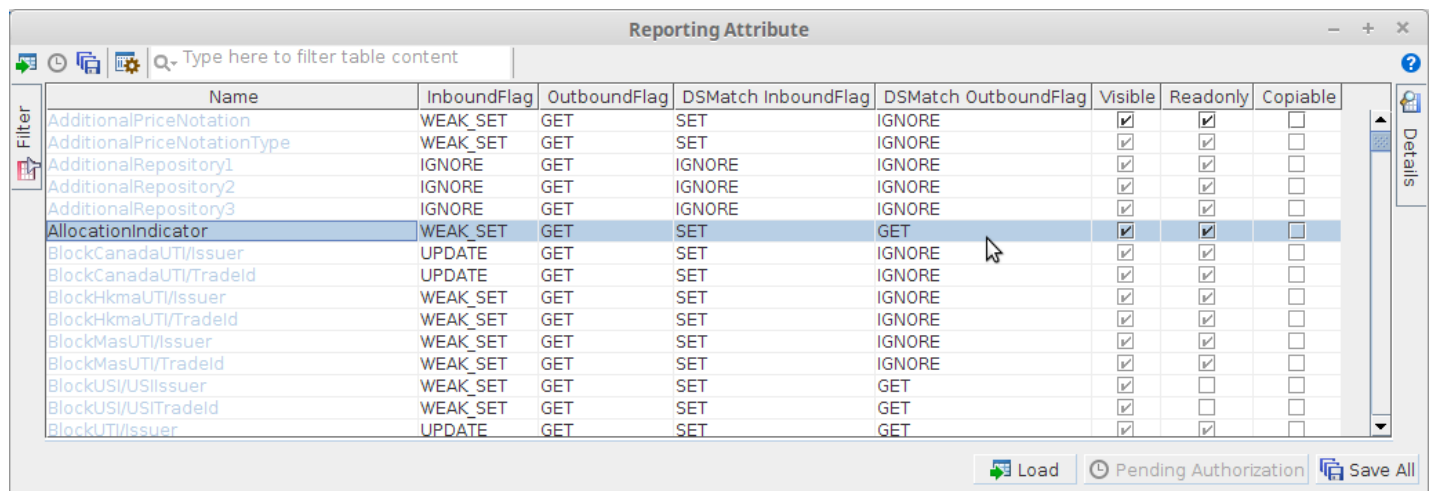


Figure 4: Editing Reporting Attributes Setup

This editor provides an additional panel giving more details about the selected reporting attribute.



Details	
Name	AllocationIndicator
Category	Trade Information
Support	trade
MapTo	GTR-AllocationIndicator
InboundFlag	WEAK_SET
OutboundFlag	GET
DSMatch InboundFlag	SET
DSMatch Outbound...	GET
Visible	<input checked="" type="checkbox"/>
Readonly	<input checked="" type="checkbox"/>
Copiable	<input type="checkbox"/>
<b>Name</b> Attribute AllocationIndicator Indicates if the trade is an allocation of a block trade that was previously real time reported	

Clicking on the attribute name will describe this reporting attribute

Details	
Name	AllocationIndicator
Category	Trade Information
Support	trade
MapTo	GTR-AllocationIndicator
InboundFlag	WEAK_SET
OutboundFlag	GET
DSMatch InboundFlag	SET
DSMatch Outbound...	GET
Visible	<input checked="" type="checkbox"/>
Readonly	<input checked="" type="checkbox"/>
Copiable	<input type="checkbox"/>
<b>OutboundFlag</b> Drives the usage of reporting information when creating DTCC GTR message * GET: Use the existing attribute value when generating an outbound message * IGNORE: Ignore the exiting attribute value when generating an outbound message	

Clicking on any other field will describe the role of the field.

## Section 3. Detailing new persistence

As already stated, starting from dtcc module 3.1 and calypso 15, the reporting data are not anymore recorded into trade keywords, but into dedicated tables.

In this section, we will detail the organization of these dedicated tables and the way this reporting information is loaded into memory.

### 3.1 Database model for new persistence

This model can be divided in 2 parts:

- The referential tables (highlighted in green in the schema below) which provide static data such as regulations, supervisors and the various sources for legal entity identifiers.  
*These tables will be filled via DTCCCommonSchemaData.xml, and they should not be modified by customers*
- The dynamic tables (highlighted in blue) which record the actual trade reporting information

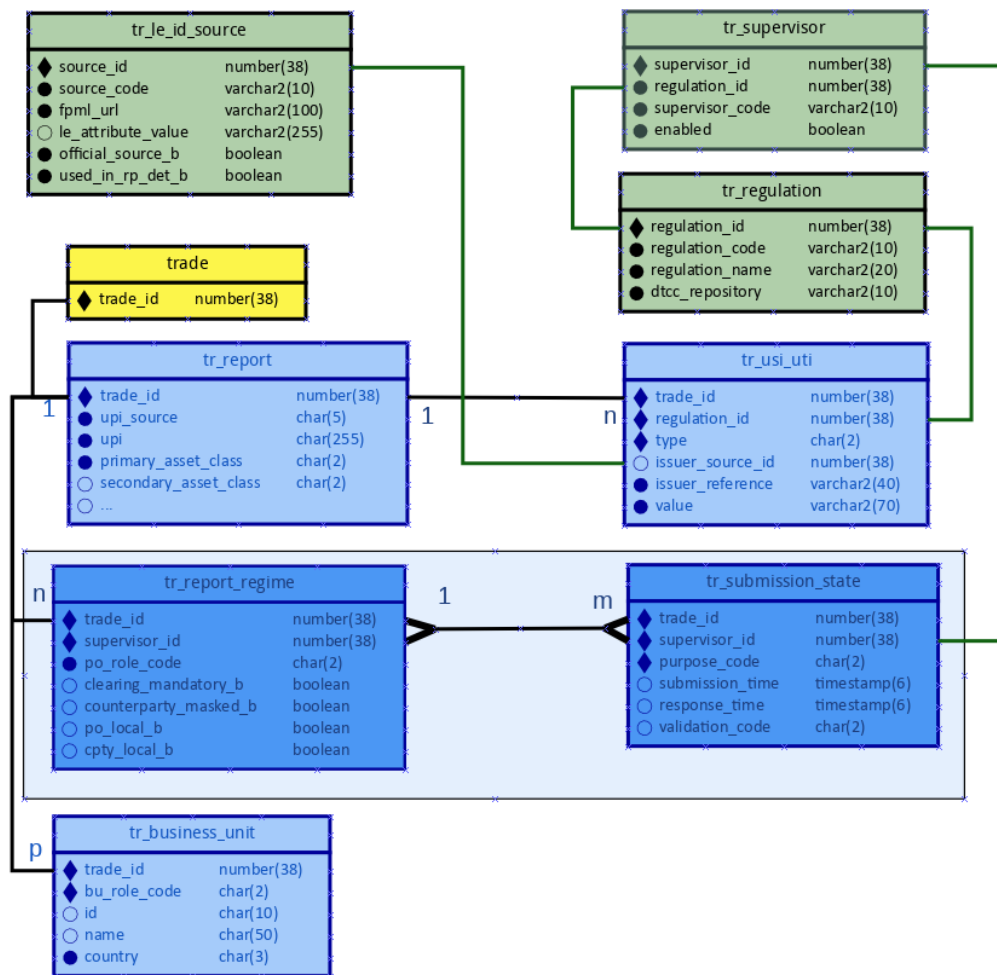


Figure 5: new persistence database model

### 3.1.1 Referential table tr\_regulation

This table records the descriptions of the various involved regulations: Dodd-Frank, EMIR, Canada, MAS, HKMA.

Table tr_regulation			
Column name	Column type	Nullable	Comments
regulation_id	number(38)		<b>Primary Key</b>
regulation_code	varchar2(10)		<b>Unique Key</b> The regulation short code (DFA, EMIR, ...)
regulation_name	varchar2(20)		<b>Unique Key</b> The regulation full name (Dodd-Frank, EMIR, ...)
dtcc_repository	varchar2(10)		Name of the related DTCC repository ✓ <b>DTCC EU</b> : EMIR repository ✓ <b>DTCC SG</b> : MAS repository ✓ <b>DTCC US</b> : others

### 3.1.2 Referential table tr\_supervisor

This table records the descriptions of the various regulation supervisors: CFTC, SEC, ESMA, Canada province supervisors, MAS and HKMA.

Table tr_regulation			
Column name	Column type	Nullable	Comments
supervisor_id	number(38)		<b>Primary Key</b>
regulation_id	number(38)		<b>Foreign Key</b> to tr_regulation.
supervisor_code	varchar2(10)		<b>Unique Key</b> The supervisor code
enabled	boolean		Indicates whether the supervisor is enabled within the dtcc module or not.

### 3.1.3 Referencial table tr\_le\_id\_source

This table records the descriptions of the various sources of identifiers for legal entities that DTCC accepts, as for instance: LEI, CICI, etc...

Table tr_le_id_source			
Column name	Column type	Nullable	Comments
source_id	number(38)		<b>Primary Key</b>
source_code	varchar2(10)		<b>Unique Key</b> The source code like LEI, CICI...
fpml_url	varchar2(200)		<b>Unique Key</b> The url used in FpML to identify the source (see the attribute issuerIdScheme of the tag issuerId in FpML)
le_attribute	varchar2(200)	X	Indicates when there is one the legal entity attribute where the id of the legal entity is stored for the related source. For instance, by default, the LEI of a legal entity will be recorded in Calypso on the LEI le_attribute.
official_source_b	boolean		Indicates whether the row is associated to an official identifier source or to a fall-back mean accepted by DTCC to specify small entities (like internal identifier or free-format text).

### 3.1.4 Table tr\_report

Each row of this table records for a given trade, the reporting information which is common to all reporting supervisors.

Table tr_report			
Column name	Column type	Nullable	Comments
trade_id	number(38)		<b>Primary Key</b>
upi_source	varchar2(5)	X	Source of the UPI: ISDA, GTR...
upi	varchar2(255)		The UPI itself
primary_asset_class	char(2)		Value in the following codes ✓ <b>IR</b> = InterestRate ✓ <b>CD</b> = CreditDerivative ✓ <b>FX</b> = ForeignExchange ✓ <b>CO</b> = Commodity ✓ <b>EQ</b> = Equity
secondary_asset_class	char(2)	X	See primary_asset_class
underlying_asset_code_type	char(4)	X	Value in the following sources: ✓ <b>ISIN</b> ✓ <b>RED</b> ✓ ...
underlying_asset_code	varchar2(35)	X	Code of the underlying asset
execution_venue	char(3)	X	Value taken in the following codes: ✓ <b>SEF</b> = Swap Execution Facility ✓ <b>DCM</b> = Designated Contract Market ✓ <b>OFF</b> = Off Market
po_collat_status_code	char(2)	X	Collateralization status for processing org. Value taken in the following codes: ✓ <b>NO</b> = Uncollateralized ✓ <b>PA</b> = Partially ✓ <b>1W</b> = One Way ✓ <b>CO</b> = Fully Collateralized
cpty_collat_status_code	char(2)	X	Collateralization status for counterparty.

Table tr_report			
Column name	Column type	Nullable	Comments
			Same values as above.
allocation_indicator	char(2)	X	Value taken in the following codes: ✓ EL = Electronic ✓ NE = Non-Electronic ✓ NA = n/a
confirmation_indicator	char(2)	X	Same values as above
off_ptf_verification_indicator	char(2)	X	Off-platform verification indicator Same values as above
price_notation_type	char(3)		The unit type of price_notation. Value taken in the following codes: ✓ BPT = Basis Points ✓ PCT = Percentage ✓ PRC = Price ✓ UPT = UpFront Points
price_notation	double		Must contain a decimal value having 0 to 8 decimal digits. Used in DSMatch only.
additional_price_notation_type	char(3)		The unit type of additional_price_notation. Same values than price_notation_type. Used in DSMatch and GTR.
additional_price_notation	double		The negotiated price of the trade. Used in DSMatch and GTR.
payment_frequency_method	char		
clearing_dco_b	boolean		
price_forming_b	boolean		
non_standard_b	boolean		
confirmation_time	timestamp(6)	X	
execution_time	timestamp(6)	X	
po_trading_capacity	char(2)	X	Trading capacity of the processing org. Value taken in the following codes: ✓ PR = Principal ✓ AG = Agent
cpty_trading_capacity	char(2)	X	Trading capacity of the counterparty.
po_collateral_portfolio_code	varchar2(20)	X	Code of processing org collateral portfolio
cpty_collateral_portfolio_code	varchar2(20)	X	Code of counterparty collateral portfolio
po_branch_location	char(2)	X	The location of the processing org branch, given as a 2-letters country code
cpty_branch_location	char(2)	X	The location of the counterparty branch, given as a 2-letters country code
portfolio_compression_b	boolean		Indicates whether the trade was issued by a portfolio compression.
terminated_by_compression_b	boolean		Indicates whether the trade has been terminated by a portfolio compression.
large_size_trade_b	boolean		Is the trade a large size trade
clearing_house_id	number(38)		Legal Entity Id of the clearing house
clearing_timestamp	timestamp(6)	X	Timestamp of clearing

Table tr_report			
Column name	Column type	Nullable	Comments
cpty_desk	varchar2(50)	X	Desk of counterparty
cpty_trader	varchar2(50)	X	Trader of counterparty
po_beneficiary_id	number(38)		Legal Entity Id of the processing org beneficiary
cpty_beneficiary_id	number(38)		Legal Entity Id of the counterparty beneficiary
po_execution_agent_id	number(38)		Legal Entity Id of the processing org execution agent
cpty_execution_agent_id	number(38)		Legal Entity Id of the counterparty execution agent
po_settlement_agent_id	number(38)		Legal Entity Id of the processing org settlement agent
cpty_settlement_agent_id	number(38)		Legal Entity Id of the counterparty settlement agent
cpty_broker_id	number(38)		Legal Entity Id of the counterparty broker
cpty_clearing_broker_id	number(38)		Legal Entity Id of the counterparty clearing broker
additional_repository1	varchar(100)	X	The name of the first additional repository, when there is one
additional_repository2_id	varchar(100)	X	The name of the second additional repository, when there is one
additional_repository3_id	varchar(100)	X	The name of the third additional repository, when there is one

### 3.1.5 Table tr\_usi\_uti

This table records all USI and UTI elements related to a given trade. We will find there the standard USI (or UTI) as well as the Fee, Old and Originating USI (or UTI). In the worst case scenario, we might have up to 8 different USI / UTI for a given trade. On most cases, we will have only 1 or 2 USI / UTI instance(s).

Table tr_usi_uti			
Column name	Column type	Nullable	Comments
trade_id	number(38)		<b>Primary Key</b>
regulation_id	number(38)		<b>Primary Key</b> Identifier of a regulation, foreign key to tr_regulation.regulation_id
type	char(2)		<b>Primary Key</b> Value in the following codes <ul style="list-style-type: none"> <li>✓ <b>ST</b> = Standard USI</li> <li>✓ <b>FE</b> = Fee USI</li> <li>✓ <b>OL</b> = Old USI</li> <li>✓ <b>OR</b> = Originating USI</li> <li>✓ <b>BL</b> = Block USI</li> <li>✓ <b>FR</b> = Far Leg USI</li> </ul>
issuer_source_id	number(38)	X	Identifier of the source of the issuer reference. This identifier is a foreign key to tr_le_id_source.
issuer_reference	varchar2(40)		The name of issuer for the related namespace source. Check the size
trade_reference	varchar(70)		The value of the USI / UTI

### 3.1.6 Table tr\_report\_regime

This table records the trade reporting information relative to each reporting supervisor. If a trade is eligible to n reporting supervisors, we should have n related rows in this table.

Table tr_report_regime			
Column name	Column type	Nullable	Comments
trade_id	number(38)		<b>Primary Key</b>
supervisor_id	number(38)		<b>Primary Key</b> Foreign key to tr_supervisor.supervisor_id
po_role_code	char(2)		The reporting role of the PO Value in the following codes <ul style="list-style-type: none"> <li>✓ RP = ReportingParty</li> <li>✓ NR = NotReportingParty</li> <li>✓ VP = VoluntaryParty</li> <li>✓ SE = SelfSubmission</li> <li>✓ DU = DualSubmission</li> <li>✓ AS = AgentSubmissionSingleSided</li> <li>✓ AG = AgentSubmissionDualSided</li> <li>✓ BR = BothReport (Canada)</li> </ul>
clearing_mandatory_b	boolean	x	When true, supervisor mandates clearing
counterparty_masked_b	boolean	x	Indicates whether the counterparty should be masked to this supervisor
po_local_b	boolean	x	<b>Canada only:</b> indicates whether the PO is local to supervisor province
cpty_local_b	boolean	x	<b>Canada only:</b> indicates whether the CPTY is local to supervisor province

### 3.1.7 Table tr\_submission\_state

This table records the status of the various submissions made for a given trade: RT, PET, Confirm, Snapshot.

Table tr_submission_state			
Column name	Column type	Nullable	Comments
trade_id	number(38)		<b>Primary Key</b>
supervisor_id	number(38)		<b>Primary Key</b> Foreign key to tr_supervisor.supervisor_id
purpose_code	char(2)		<b>Primary Key</b> Value in the following codes <ul style="list-style-type: none"> <li>✓ RT = RealTime</li> <li>✓ PT = PET</li> <li>✓ CF = Confirm</li> <li>✓ SN = Snapshot</li> </ul>
submission_time	timestamp(6)		Timestamp of submission
response_time	timestamp(6)	X	Timestamp of response the submission
validation_code	char(2)	X	Indicates the outcome of the submission. Value in the following codes <ul style="list-style-type: none"> <li>✓ OK = Success</li> <li>✓ KO = Failure</li> <li>✓ WR = Warning</li> </ul>

### 3.1.8 Table tr\_business\_unit

This table records the business unit information that is carried by the report and which is presently carried by the reporting attributes **BusinessUnit-Broker**, **BusinessUnit-Desk**, **BusinessUnit-Sales** and **BusinessUnit-Trader**.

Table tr_business_unit			
Column name	Column type	Nullable	Comments
trade_id	number(38)		<b>Primary Key</b>
bu_role_code	char(2)		<b>Primary Key</b> Value in the following codes ✓ BR = Broker ✓ DS = Desk ✓ SA = Sales ✓ TR = Trader Java Type = <code>IBusinessUnitRole</code> .
id	varchar2(10)	X	Identifier of the business unit
name	varchar2(50)	X	Name of the business unit
country	char(3)		Country ISO code on 3 characters



## 3.2 Reporting information in memory

To simplify the migration process and accelerate the implementation, we have chosen to keep the actual keyword implementation in the memory representation of a trade. In other words, in database the reporting information will be recorded in the specific tables discussed before, but in memory the reporting information will still be available through the trade keywords.

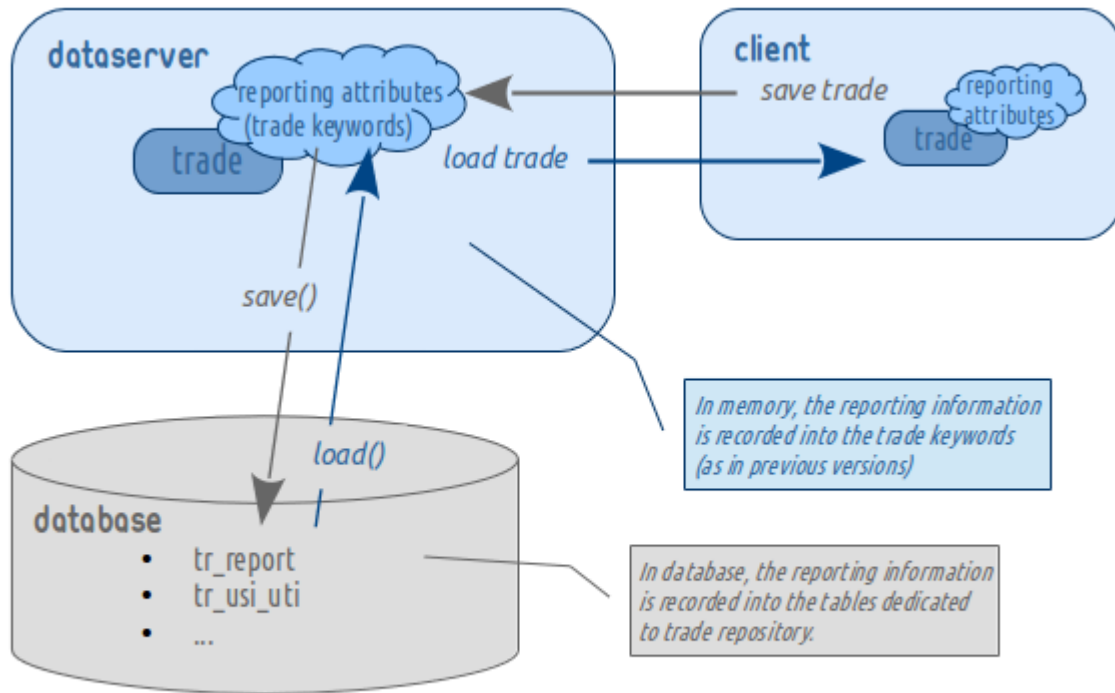


Figure 6: handling reporting information in calypso

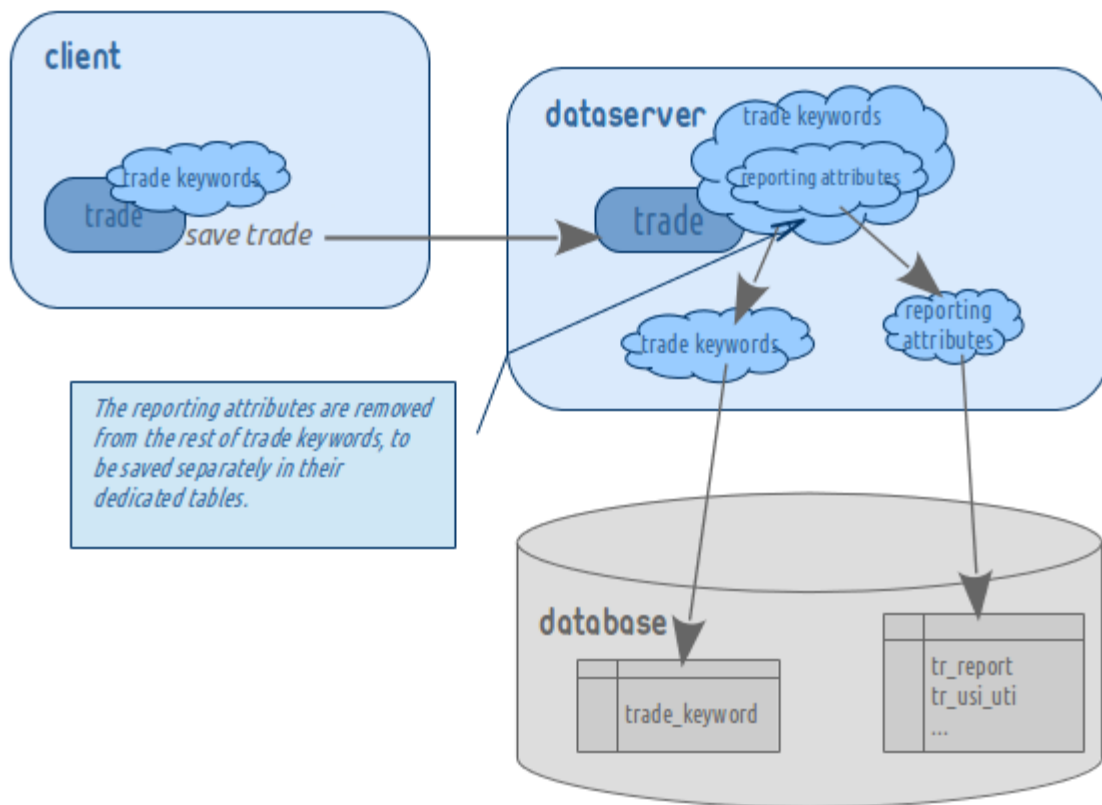


Figure 7: Saving reporting information along with trade

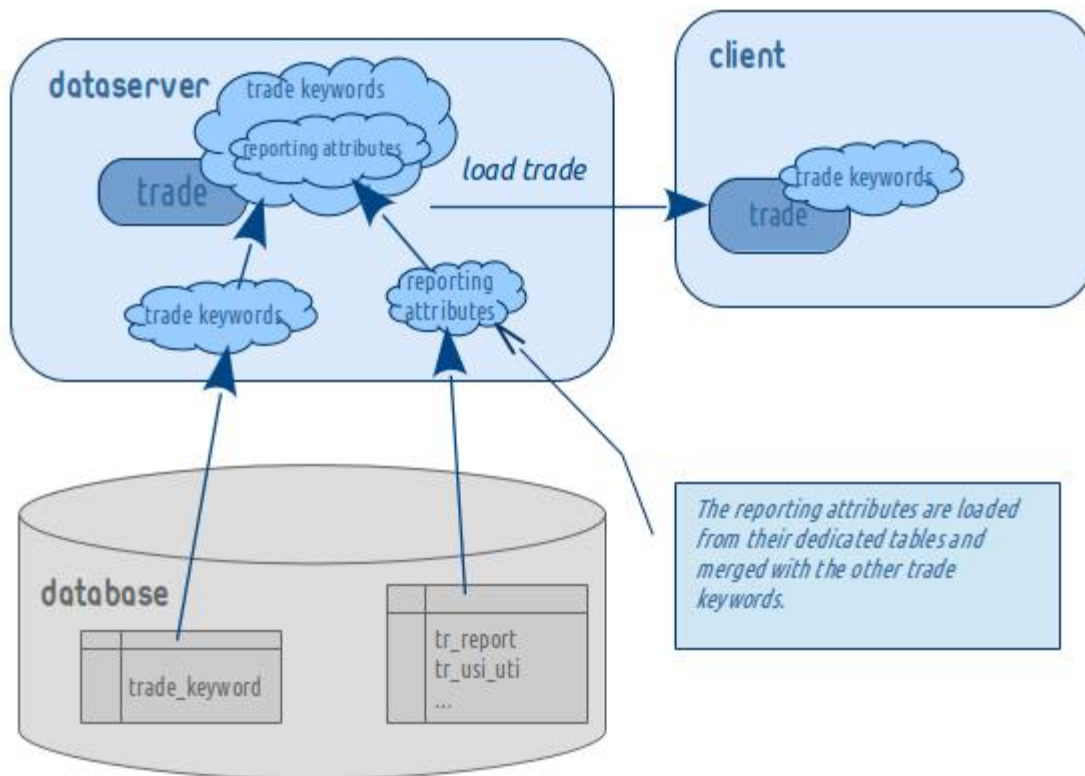


Figure 8: loading reporting information along with trade

This "trick" has several advantages:

- There are no changes for clients which does not need to change anything to their custom code
- The migration process to the new persistence will be very smooth
- The reporting information continue to share the trade lifecycle (for instance, a modification of the reporting attribute value is still traceable in the audit)
- The reporting information can still be displayed with the existing GUI (reports, trade keyword windows...)
- The reporting information can still be used in SD filters without any change

## Section 4. Reporting attributes

### 4.1 Introduction and properties

We may have moved the persistence of the reporting information to specific tables, we still need reporting attributes: in-memory trades still handle reporting information through trade keywords; we still need to tell calypso how to deal with reporting information when processing incoming messages or generating outgoing submissions.

A reporting attribute has the following properties.

Column name	Comments
<b>Name</b>	Unique name of the reporting attribute
<b>Category</b>	Reporting attribute category (Trade Information, ProcessingOrg Information, Clearing Information...).
	This property is purely informational and can be modified freely by customers.
<b>Support</b>	Object supporting the reporting attribute. Available values are: ✓ <b>trade</b> : the attribute is mapped upon a trade keyword (default) ✓ <b>constant</b> : the attribute has a constant value given in the property <b>MapTo</b> .
<b>MapTo</b>	The trade keyword the reporting attribute maps to. Or the constant value taken by the reporting attribute.
<b>InboundFlag</b>	The flag driving the processing of inbound GTR messages. Available values are: ✓ <b>SET</b> : the attribute will be set by incoming messages (default) ✓ <b>IGNORE</b> : the attribute will ignore incoming GTR messages ✓ <b>WEAK_SET</b> : the attribute will be set by incoming messages only when not already set (useful to prevent incoming data from overriding information that customer has already set) ✓ <b>UPDATE</b> : the reporting attribute will be updated by incoming messages only when new value is not null (this prevent missing fields in incoming message to erase existing data) ✓ <b>MERGE</b> : the incoming data will be merged with existing value (only for composite attributes)
<b>OutboundFlag</b>	The flag driving the processing of outbound GTR messages. Available values are: ✓ <b>GET</b> : get the attribute value when generating outgoing submissions ✓ <b>IGNORE</b> : ignore the attribute value when generating outgoing submissions (default)
<b>DSMatch InboundFlag</b>	The flag driving the processing of inbound DerivServ messages. Available values are the same than for <b>iflag</b> .
<b>DSMatch OutboundFlag</b>	The flag driving the processing of outbound DerivServ messages. ✓ Available values are the same than for <b>oflag</b> .
<b>Visible</b>	When <b>true</b> , the related keyword is visible from trade keyword window. Default value = <b>true</b> .
<b>Readonly</b>	When <b>true</b> , the related keyword is readonly in the trade keyword window (the related keyword belongs to the domain <b>readonlyKeyword</b> ). Default value = <b>false</b> . <i>This column is not used in calypso versions prior to V15. In that case, customers can add the related trade keyword into <b>systemKeyword</b> domain.</i>
<b>Copiable</b>	When <b>true</b> , the reporting attribute is copied when calling " <b>Save as New...</b> " from trade window (the related keyword belongs to the domain <b>copiableKeyword</b> ). Default value = <b>false</b> . <i>This column is not used in calypso versions prior to V15. In that case, customers can add the related trade keyword into <b>systemKeyword</b> domain.</i>

## 4.2 Reporting attribute setup

The reporting attribute setup has moved to a dedicated table [tr\\_reporting\\_attr](#) which handles a single row for each reporting attribute. This table has the following structure.

Table tr_reporting_attr			
Column name	Column type	Nullable	Comments
reporting_attribute_id	number(38)		<b>Primary Key</b> The unique identifier for the reporting attribute
version	number(38)		The version of the row (modifications made via the Reporting Attribute Window are versioned)
attribute_name	varchar(128)		<b>Unique Key</b> <b>Name</b> of the reporting attribute
category	varchar(128)		See property <b>Category</b> explained in previous section
support	varchar(10)		See property <b>Support</b>
map_to	varchar(128)		See property <b>MapTo</b>
iflag	varchar(10)		See property <b>InboundFlag</b>
oflag	varchar(10)		See property <b>OutboundFlag</b>
dsmatch_iflag	varchar(10)		See property <b>DSMatch InboundFlag</b>
dsmatch_oflag	varchar(10)		See property <b>DSMatch OutboundFlag</b>
visible	boolean		See property <b>Visible</b>
readonly	boolean		See property <b>Readonly</b>
copiable	boolean		See property <b>Copiable</b>
description	varchar(128)	x	A description of the reporting attribute. This description is displayed in the Reporting Attribute Window, when clicking on the attribute name in the <b>Details</b> panel.

In addition to [tr\\_reporting\\_attr](#), the related table [tr\\_reporting\\_attr\\_restriction](#) provides the allowed values for each attribute (when appropriate). Those restrictions will be used by the Trade Keyword Window to drive user input.

### 4.3 List of reporting attributes

Value (Name of the reporting attribute)	Related trade keyword (default mapping)	Description
AdditionalPriceNotation	Reporting-AdditionalPriceNotation	Indicates the negotiated price. Previously used in DSMatch only. Now used for GTR as well.
AdditionalPriceNotationType	Reporting-AdditionalPriceNotationType	Provides the unit type of the negotiated price. Previously used in DSMatch only. Now used for GTR as well. Valid values: BasisPoint, Percentage, Price, UpfrontPoints.
AdditionalRepository1	Reporting-AdditionalRepository1	If trade has been reported to another Repository, the Legal Entity Id of the other repository (#1)
AdditionalRepository2	Reporting-AdditionalRepository2	If trade has been reported to another Repository, the Legal Entity Id of the other repository (#2)
AdditionalRepository3	Reporting-AdditionalRepository3	If trade has been reported to another Repository, the Legal Entity Id of the other repository (#3)
AllocationIndicator	Reporting-AllocationIndicator	Indicates if the trade is an allocation of a block trade that was previously real time reported Valid values : PreAllocation, PostAllocation
AsicUTI/Issuer	Reporting-AsicUTI/Issuer	Issuer part (aka namespace) of the UTI (Unique Trade Identifier) for ASIC Reporting
AsicUTI/TradeId	Reporting-AsicUTI/TradeId	Trade Id part of the UTI (Unique Trade Identifier) for ASIC Reporting
BlockCanadaUTI/Issuer	Reporting-BlockCanadaUTI/Issuer	Use a block Canada UTI when you are reporting a block of trades altogether. This attribute is the issuer part of the UTI (aka UTI namespace)
BlockCanadaUTI/TradeId	Reporting-BlockCanadaUTI/TradeId	Use a block Canada UTI when you are reporting a block of trades altogether. This attribute is the trade id part of the UTI
BlockHkmaUTI/Issuer	Reporting-BlockHkmaUTI/Issuer	Use a block HKMA UTI when you are reporting a block of trades altogether. This attribute is the issuer part of the UTI (aka UTI namespace)
BlockHkmaUTI/TradeId	Reporting-BlockHkmaUTI/TradeId	Use a block HKMA UTI when you are reporting a block of trades altogether. This attribute is the trade id part of the UTI
BlockMasUTI/Issuer	Reporting-BlockMasUTI/Issuer	Use a block MAS UTI when you are reporting a block of trades altogether. This attribute is the issuer part of the UTI (aka UTI namespace)
BlockMasUTI/TradeId	Reporting-BlockMasUTI/TradeId	Use a block MAS UTI when you are reporting a block of trades altogether. This attribute is the trade id part of the UTI
BlockUSI/USIIssuer	Reporting-BlockUSI/USIIssuer	Use a block USI when you are reporting a block of trades altogether. This attribute is the issuer part of the USI (aka USI namespace)
BlockUSI/USITradeId	Reporting-BlockUSI/USITradeId	Use a block USI when you are reporting a block of trades altogether. This attribute is the trade id part of the USI
BlockUTI/Issuer	Reporting-BlockUTI/Issuer	Use a block UTI when you are reporting a block of trades altogether. This attribute is the issuer part of the UTI (aka UTI namespace)
BlockUTI/TradeId	Reporting-BlockUTI/TradeId	Use a block UTI when you are reporting a block of trades altogether. This attribute is the trade id part of the UTI
BusinessUnit-Broker	Reporting-BusinessUnit-Broker	The business unit with broker role. Format country [id] [name]

Value (Name of the reporting attribute)	Related trade keyword (default mapping)	Description
BusinessUnit-Desk	Reporting-BusinessUnit-Desk	The business unit with desk role. Format country[[id]][[name]]
BusinessUnit-Sales	Reporting-BusinessUnit-Sales	The business unit with sales role. Format country[[id]][[name]]
BusinessUnit-Trader	Reporting-BusinessUnit-Trader	The business unit with trader role. Format country[[id]][[name]]
CanadaUTI/Issuer	Reporting-CanadaUTI/Issuer	Issuer part (aka namespace) of the UTI (Unique Trade Identifier) for Canada Reporting
CanadaUTI/TradeId	Reporting-CanadaUTI/TradeId	Trade Id part of the UTI (Unique Trade Identifier) for Canada Reporting
ClearingDCO	Reporting-ClearingDCO	Indicates if the transaction is going to be cleared (concretely). Valid values: true, false
ClearingExceptionPartyValue	Reporting-ClearingExceptionPartyValue	Indicates if there is a Clearing Exception explaining that the trade is not going to be cleared even it was mandatorily clearable. Used in DSMatch only. Valid values: true, false
ClearingMandatory-ASIC	Reporting-ClearingMandatory-ASIC	Indicates whether the trade needs to be cleared according to the ASIC Valid values: true, false
ClearingMandatory-CA.AB.ASC	Reporting-ClearingMandatory-CA.AB.ASC	Indicates whether the trade needs to be cleared according to the Canadian Alberta Provincial Jurisdiction Valid values: true, false
ClearingMandatory-CA.BC.BCSC	Reporting-ClearingMandatory-CA.BC.BCSC	Indicates whether the trade needs to be cleared according to the Canadian British Columbia Provincial Jurisdiction Valid values: true, false
ClearingMandatory-CA.MB.MSC	Reporting-ClearingMandatory-CA.MB.MSC	Indicates whether the trade needs to be cleared according to the Canadian Manitoba Provincial Jurisdiction Valid values: true, false
ClearingMandatory-CA.NB.FCSC	Reporting-ClearingMandatory-CA.NB.FCSC	Indicates whether the trade needs to be cleared according to the Canadian New Brunswick Provincial Jurisdiction Valid values: true, false
ClearingMandatory-CA.NL.DSS	Reporting-ClearingMandatory-CA.NL.DSS	Indicates whether the trade needs to be cleared according to the Canadian Newfoundland and Labrador Provincial Jurisdiction Valid values: true, false
ClearingMandatory-CA.NS.NSSC	Reporting-ClearingMandatory-CA.NS.NSSC	Indicates whether the trade needs to be cleared according to the Canadian Nova Scotia Provincial Jurisdiction Valid values: true, false
ClearingMandatory-CA.NT.NTSO	Reporting-ClearingMandatory-CA.NT.NTSO	Indicates whether the trade needs to be cleared according to the Canadian Northwest Provincial Jurisdiction Valid values: true, false
ClearingMandatory-CA.NU.NSO	Reporting-ClearingMandatory-CA.NU.NSO	Indicates whether the trade needs to be cleared according to the Canadian Nunavut Provincial Jurisdiction Valid values: true, false
ClearingMandatory-CA.ON.OSC	Reporting-ClearingMandatory-CA.ON.OSC	Indicates whether the trade needs to be cleared according to the Canadian Ontario Provincial Jurisdiction Valid values: true, false

Value (Name of the reporting attribute)	Related trade keyword (default mapping)	Description
ClearingMandatory-CA.PEI.OSS	Reporting-ClearingMandatory-CA.PEI.OSS	Indicates whether the trade needs to be cleared according to the Canadian Prince Edward Island Provincial Jurisdiction Valid values: true, false
ClearingMandatory-CA.QC.AMF	Reporting-ClearingMandatory-CA.QC.AMF	Indicates whether the trade needs to be cleared according to the Canadian Quebec Provincial Jurisdiction Valid values: true, false
ClearingMandatory-CA.SK.FCAA	Reporting-ClearingMandatory-CA.SK.FCAA	Indicates whether the trade needs to be cleared according to the Canadian Saskatchewan Provincial Jurisdiction Valid values: true, false
ClearingMandatory-CA.YT.OSS	Reporting-ClearingMandatory-CA.YT.OSS	Indicates whether the trade needs to be cleared according to the Canadian Yukon Provincial Jurisdiction Valid values: true, false
ClearingMandatory-CFTC	Reporting-ClearingMandatory-CFTC	Indicates whether the trade needs to be cleared according to the CFTC Valid values: true, false
ClearingMandatory-ESMA	Reporting-ClearingMandatory-ESMA	Indicates whether the trade needs to be cleared according to ESMA Valid values: true, false
ClearingMandatory-FCA	Reporting-ClearingMandatory-FCA	Indicates whether the trade needs to be cleared according to FCA Valid values: true, false
ClearingMandatory-HKMA	Reporting-ClearingMandatory-HKMA	Indicates whether the trade needs to be cleared according to HKMA Valid values: true, false
ClearingMandatory-MAS	Reporting-ClearingMandatory-MAS	Indicates whether the trade needs to be cleared according to MAS Valid values: true, false
ClearingMandatory-SEC	Reporting-ClearingMandatory-SEC	Indicates whether the trade needs to be cleared according to SEC Valid values: true, false
ClearingSwapUSIPrefix	USIPrefix	This field is not implemented in the out of the box DTCCGTR templates. It has been reserved for future use and application. As required by DTCC.
ClearingSwapUSIValue	USIValue	This field is not implemented in the out of the box DTCCGTR templates. It has been reserved for future use and application. As required by DTCC.
ClearingSwapUTIPrefix	UTIPrefix	Indicates the UTI prefix assigned to a cleared swap
ClearingSwapUTIValue	UTIValue	Indicates the UTI value assigned to a cleared swap
ClearingSwapPriorUSIPrefix	PriorUSIPrefix	This field is not implemented in the out of the box DTCCGTR templates. It has been reserved for future use and application. As required by DTCC.
ClearingSwapPriorUSIValue	PriorUSIValue	This field is not implemented in the out of the box DTCCGTR templates. It has been reserved for future use and application. As required by DTCC.
ClearingSwapPriorUTIPrefix	PriorUTIPrefix	Indicates the Prior UTI prefix of a cleared swap
ClearingSwapPriorUTIValue	PriorUTIValue	Indicates the Prior UTI value of a cleared swap
Compression	Reporting-Compression	Specifies whether this new trade was issued from a compression exercise Valid values: true, false
ConfirmedTimestamp	Reporting-ConfirmedTimestamp	Specifies the confirmation timestamp



Value (Name of the reporting attribute)	Related trade keyword (default mapping)	Description
Counterparty-Beneficiary	Reporting-Counterparty-Beneficiary	Specifies the id of the subject to the rights and obligations arising from the trade on the counterparty side. Used for EMIR reporting in case of Full Delegation.
Counterparty-BranchLocation	Reporting-Counterparty-BranchLocation	In the case of a trade entered by the overseas branch of the counterparty, provide the country of the overseas branch. Used for EMIR reporting in case of Full Delegation.
Counterparty-Broker	Reporting-Counterparty-Broker	Broker of the Counterparty. Used for EMIR reporting in case of Full Delegation.
Counterparty-ClearingBroker	Reporting-Counterparty-ClearingBroker	Clearing Broker of the Counterparty Used for EMIR reporting in case of Full Delegation.
Counterparty-Collateralized	Reporting-Counterparty-Collateralized	Specifies the collateralization on the trade on the Counterparty side. Valid values: Uncollateralized, Partially, OneWay, Fully. Used for EMIR reporting in case of Full Delegation.
Counterparty-CollateralPortfolioCode	Reporting-Counterparty-CollateralPortfolioCode	If the counterparty collateral is reported on a portfolio basis, the portfolio should be identified by a unique code. Used for EMIR reporting in case of Full Delegation.
Counterparty-CommercialActivity	Reporting-Counterparty-CommercialActivity	Information on whether the contract is objectively measurable as directly linked to the counterparty commercial or treasury financing activity. Valid values: true, false. Defaulted to false. Used for EMIR reporting in case of Full Delegation.
Counterparty-Desk	Reporting- Counterparty-Desk	Unique identifier for desk of the Counterparty.
Counterparty-ExecutionAgent	Reporting- Counterparty-ExecutionAgent	Legal Entity Id of execution agent (Asset Manager) for the Counterparty
Counterparty-SettlementAgent	Reporting- Counterparty-SettlementAgent	Legal Entity Id of settlement agent for the Counterparty
Counterparty-Trader	Reporting- Counterparty-Trader	Unique identifier for trader of the Counterparty.
Counterparty-TradingCapacity	Reporting-Counterparty-TradingCapacity	Identifies whether the counterparty has concluded the contract as principal on own account or as agent for the account of a client. Valid values: Principal, Agent. Defaulted to Principal. Used for EMIR reporting in case of Full Delegation.
CounterpartyNonDisclosure	Reporting-CounterpartyNonDisclosure	The mono-jurisdiction way to indicate that the trade counterparty should not be disclosed. In this case, the counterparty identifier is not sent to DTCC (it is replaced by "*****"). Could be deprecated soon.
ElectronicConfirmation	Reporting-ElectronicConfirmation	Describes how the trade was confirmed. Valid values: Electronic, NonElectronic. Defaults to "NonElectronic"
ExecutionTimestamp	Reporting-ExecutionTimestamp	The trade execution timestamp. When not present, we will provide to DTCC the trade date
ExecutionVenue	Reporting-ExecutionVenue	The trade execution platform. Optional Valid values: OffFacility, SEF, DCM.
FcaUTI/Issuer	Reporting-FcaUTI/Issuer	Issuer part (aka namespace) of the UTI (Unique Trade Identifier)

Value (Name of the reporting attribute)	Related trade keyword (default mapping)	Description
FcaUTI/TradeId	Reporting-FcaUTI/TradeId	Trade Id part of the UTI (Unique Trade Identifier)
FeeCanadaUTI/Issuer	Reporting-FeeCanadaUTI/Issuer	The Fee Canada UTI (used in DSMatch) is the UTI of a fee attached to a trade event (like a novation). This is the issuer part of the UTI
FeeCanadaUTI/TradeId	Reporting-FeeCanadaUTI/TradeId	The Fee Canada UTI (used in DSMatch) is the UTI of a fee attached to a trade event (like a novation). This is the trade id part of the UTI
FeeHkmaUTI/Issuer	Reporting-FeeCanadaUTI/Issuer	The Fee Hkma UTI is the UTI of a fee attached to a trade event (like a novation). This is the issuer part of the UTI
FeeHkmaUTI/TradeId	Reporting-FeeCanadaUTI/TradeId	The Fee Hkma UTI is the UTI of a fee attached to a trade event (like a novation). This is the trade id part of the UTI
FeeMasUTI/Issuer	Reporting-FeeCanadaUTI/Issuer	The Fee Mas UTI is the UTI of a fee attached to a trade event (like a novation). This is the issuer part of the UTI
FeeMasUTI/TradeId	Reporting-FeeCanadaUTI/TradeId	The Fee Mas UTI is the UTI of a fee attached to a trade event (like a novation). This is the trade id part of the UTI
FeeUSI/USIIssuer	Reporting-FeeUSI/USIIssuer	The Fee USI (used in DSMatch) is the USI of a fee attached to a trade event (like a novation). This is the issuer part of the USI
FeeUSI/USITradeId	Reporting-FeeUSI/USITradeId	The Fee USI (used in DSMatch) is the USI of a fee attached to a trade event (like a novation). This is the trade id part of the USI
FeeUTI/Issuer	Reporting-FeeUTI/Issuer	The Fee UTI (used in DSMatch) is the UTI of a fee attached to a trade event (like a novation). This is the issuer part of the UTI
FeeUTI/TradeId	Reporting-FeeUTI/TradeId	The Fee UTI (used in DSMatch) is the UTI of a fee attached to a trade event (like a novation). This is the trade id part of the UTI
GTR-Version	Reporting-GTR-Version	Indicates the GTR version for each asset class and jurisdiction. This field is populated by the relevant domain GTR-InterestRate-Version, GTR-Credit-Version, GTR-ForeignExchange-Version, GTR-Equity-Version, and GTR-Commodity-Version.
HkmaUTI/Issuer	Reporting-HkmaUTI/Issuer	Issuer part (aka namespace) of the UTI (Unique Trade Identifier)
HkmaUTI/TradeId	Reporting-HkmaUTI/TradeId	Trade Id part of the UTI (Unique Trade Identifier)
IsCounterpartyLocal-CA.AB.ASC	Reporting-IsCounterpartyLocal-CA.AB.ASC	Indicates if the Counterparty is a "local counterparty" to the Canadian Alberta Provincial jurisdiction. This attribute is set by Calypso workflow rules Valid values: true, false
IsCounterpartyLocal-CA.BC.BCSC	Reporting-IsCounterpartyLocal-CA.BC.BCSC	Indicates if the Counterparty is a "local counterparty" to the Canadian British Columbia Provincial jurisdiction. This attribute is set by Calypso workflow rules Valid values: true, false
IsCounterpartyLocal-CA.MB.MSC	Reporting-IsCounterpartyLocal-CA.MB.MSC	Indicates if the Counterparty is a "local counterparty" to the Canadian Manitoba Provincial jurisdiction. This attribute is set by Calypso workflow rules Valid values: true, false
IsCounterpartyLocal-CA.NB.FCSC	Reporting-IsCounterpartyLocal-CA.NB.FCSC	Indicates if the Counterparty is a "local counterparty" to the Canadian New Brunswick Provincial jurisdiction. This attribute is set by Calypso workflow rules Valid values: true, false

Value (Name of the reporting attribute)	Related trade keyword (default mapping)	Description
IsCounterpartyLocal-CA.NL.DSS	Reporting-IsCounterpartyLocal-CA.NL.DSS	Indicates if the Counterparty is a "local counterparty" to the Canadian Newfoundland and Labrador Provincial jurisdiction. This attribute is set by Calypso workflow rules Valid values: true, false
IsCounterpartyLocal-CA.NS.NSSC	Reporting-IsCounterpartyLocal-CA.NS.NSSC	Indicates if the Counterparty is a "local counterparty" to the Canadian Nova Scotia Provincial jurisdiction. This attribute is set by Calypso workflow rules Valid values: true, false
IsCounterpartyLocal-CA.NT.NTSO	Reporting-IsCounterpartyLocal-CA.NT.NTSO	Indicates if the Counterparty is a "local counterparty" to the Canadian Northwest Provincial jurisdiction. This attribute is set by Calypso workflow rules Valid values: true, false
IsCounterpartyLocal-CA.NU.NSO	Reporting-IsCounterpartyLocal-CA.NU.NSO	Indicates if the Counterparty is a "local counterparty" to the Canadian Nunavut Provincial jurisdiction. This attribute is set by Calypso workflow rules Valid values: true, false
IsCounterpartyLocal-CA.ON.OSC	Reporting-IsCounterpartyLocal-CA.ON.OSC	Indicates if the Counterparty is a "local counterparty" to the Canadian Ontario Provincial jurisdiction. This attribute is set by Calypso workflow rules Valid values: true, false
IsCounterpartyLocal-CA.PEI.OSS	Reporting-IsCounterpartyLocal-CA.PEI.OSS	Indicates if the Counterparty is a "local counterparty" to the Canadian Prince Edward Island Provincial jurisdiction. This attribute is set by Calypso workflow rules Valid values: true, false
IsCounterpartyLocal-CA.QC.AMF	Reporting-IsCounterpartyLocal-CA.QC.AMF	Indicates if the Counterparty is a "local counterparty" to the Canadian Quebec Provincial jurisdiction. This attribute is set by Calypso workflow rules Valid values: true, false
IsCounterpartyLocal-CA.SK.FCAA	Reporting-IsCounterpartyLocal-CA.SK.FCAA	Indicates if the Counterparty is a "local counterparty" to the Canadian Saskatchewan Provincial jurisdiction. This attribute is set by Calypso workflow rules Valid values: true, false
IsCounterpartyLocal-CA.YT.OSS	Reporting-IsCounterpartyLocal-CA.YT.OSS	Indicates if the Counterparty is a "local counterparty" to the Canadian Yukon Provincial jurisdiction. This attribute is set by Calypso workflow rules Valid values: true, false
IsProcessingOrgLocal-CA.AB.ASC	Reporting-IsProcessingOrgLocal-CA.AB.ASC	Indicates if the ProcessingOrg is a "local counterparty" to the Canadian Alberta Provincial jurisdiction. This attribute is set by Calypso workflow rules Valid values: true, false
IsProcessingOrgLocal-CA.BC.BCSC	Reporting-IsProcessingOrgLocal-CA.BC.BCSC	Indicates if the ProcessingOrg is a "local counterparty" to the Canadian British Columbia Provincial jurisdiction. This attribute is set by Calypso workflow rules Valid values: true, false
IsProcessingOrgLocal-CA.MB.MSC	Reporting-IsProcessingOrgLocal-CA.MB.MSC	Indicates if the ProcessingOrg is a "local counterparty" to the Canadian Manitoba Provincial jurisdiction. This attribute is set by Calypso workflow rules Valid values: true, false
IsProcessingOrgLocal-CA.NB.FCSC	Reporting-IsProcessingOrgLocal-CA.NB.FCSC	Indicates if the ProcessingOrg is a "local counterparty" to the Canadian New Brunswick Provincial jurisdiction. This attribute is set by Calypso workflow rules Valid values: true, false

Value (Name of the reporting attribute)	Related trade keyword (default mapping)	Description
IsProcessingOrgLocal-CA.NL.DSS	Reporting-IsProcessingOrgLocal-CA.NL.DSS	Indicates if the ProcessingOrg is a "local counterparty" to the Canadian Newfoundland and Labrador Provincial jurisdiction. This attribute is set by Calypso workflow rules Valid values: true, false
IsProcessingOrgLocal-CA.NS.NSSC	Reporting-IsProcessingOrgLocal-CA.NS.NSSC	Indicates if the ProcessingOrg is a "local counterparty" to the Canadian Nova Scotia Provincial jurisdiction. This attribute is set by Calypso workflow rules Valid values: true, false
IsProcessingOrgLocal-CA.NT.NTSO	Reporting-IsProcessingOrgLocal-CA.NT.NTSO	Indicates if the ProcessingOrg is a "local counterparty" to the Canadian Northwest Provincial jurisdiction. This attribute is set by Calypso workflow rules Valid values: true, false
IsProcessingOrgLocal-CA.NU.NSO	Reporting-IsProcessingOrgLocal-CA.NU.NSO	Indicates if the ProcessingOrg is a "local counterparty" to the Canadian Nunavut Provincial jurisdiction. This attribute is set by Calypso workflow rules Valid values: true, false
IsProcessingOrgLocal-CA.ON.OSC	Reporting-IsProcessingOrgLocal-CA.ON.OSC	Indicates if the ProcessingOrg is a "local counterparty" to the Canadian Ontario Provincial jurisdiction. This attribute is set by Calypso workflow rules Valid values: true, false
IsProcessingOrgLocal-CA.PEI.OSS	Reporting-IsProcessingOrgLocal-CA.PEI.OSS	Indicates if the ProcessingOrg is a "local counterparty" to the Canadian Prince Edward Island Provincial jurisdiction. This attribute is set by Calypso workflow rules Valid values: true, false
IsProcessingOrgLocal-CA.QC.AMF	Reporting-IsProcessingOrgLocal-CA.QC.AMF	Indicates if the ProcessingOrg is a "local counterparty" to the Canadian Quebec Provincial jurisdiction. This attribute is set by Calypso workflow rules Valid values: true, false
IsProcessingOrgLocal-CA.SK.FCAA	Reporting-IsProcessingOrgLocal-CA.SK.FCAA	Indicates if the ProcessingOrg is a "local counterparty" to the Canadian Saskatchewan Provincial jurisdiction. This attribute is set by Calypso workflow rules Valid values: true, false
IsProcessingOrgLocal-CA.YT.OSS	Reporting-IsProcessingOrgLocal-CA.YT.OSS	Indicates if the ProcessingOrg is a "local counterparty" to the Canadian Yukon Provincial jurisdiction. This attribute is set by Calypso workflow rules Valid values: true, false
LargeSizeTrade	Reporting-LargeSizeTrade	Indicates whether the submitter considers the trade to be a large notional trade a block trade, and thus eligible for delayed public reporting. EMIR only. Valid values: true, false. Defaulted to false
MaskedCounterparty-ASIC	Reporting-MaskedCounterparty-ASIC	Indicates the trade counterparty should be masked to ASIC. Valid values: true, false. Defaults to false
MaskedCounterparty-CFTC	Reporting-MaskedCounterparty-CFTC	Indicates the trade counterparty should be masked to CFTC. Valid values: true, false. Defaults to false
MaskedCounterparty-ESMA	Reporting-MaskedCounterparty-ESMA	Indicates the trade counterparty should be masked to ESMA. Valid values: true, false. Defaults to false

Value (Name of the reporting attribute)	Related trade keyword (default mapping)	Description
MaskedCounterparty-FCA	Reporting-MaskedCounterparty-FCA	Indicates the trade counterparty should be masked to FCA. Valid values: true, false. Defaults to false
MaskedCounterparty-HKMA	Reporting-MaskedCounterparty-HKMA	Indicates the trade counterparty should be masked to HKMA. Valid values: true, false. Defaults to false
MaskedCounterparty-MAS	Reporting-MaskedCounterparty-MAS	Indicates the trade counterparty should be masked to MAS. Valid values: true, false. Defaults to false
MaskedCounterparty-SEC	Reporting-MaskedCounterparty-SEC	Indicates the trade counterparty should be masked to SEC. Valid values: true, false. Defaults to false
MasUTI/Issuer	Reporting-MasUTI/Issuer	Issuer part (aka namespace) of the UTI (Unique Trade Identifier) for Mas Reporting
MasUTI/TradeId	Reporting-MasUTI/TradeId	Trade Id part of the UTI (Unique Trade Identifier) for Mas Reporting
MasUTIGeneratingParty	Reporting-UTIGeneratingParty	The short name of the legal entity which generates the UTI for Mas
NonStandardFlag	Reporting-NonStandardFlag	Indicates when one or more additional term(s) or provision(s), other than those listed in the required real-time data fields materially affects the price of the trade. Valid values: true, false. Defaults to false
NovationFeeReportingParty-CFTC	Reporting-NovationFeeReportingParty-CFTC	Used by Calypso to record the short name of the legal entity in charge of reporting the novation fee to CFTC. (Indeed, in case of novation, the fee is exchanged between the transferor and the transferee. Therefore, the reporting party of the novation fee can be different from the reporting party of the initial trade).
NovationFeeReportingParty-SEC	Reporting-NovationFeeReportingParty-SEC	Used by Calypso to record the short name of the legal entity in charge of reporting the novation fee to SEC. (Indeed, in case of novation, the fee is exchanged between the transferor and the transferee. Therefore, the reporting party of the novation fee can be different from the reporting party of the initial trade).
OffPlatformVerification	Reporting-OffPlatformVerification	Describes how the trade was verified. Valid values: Electronic, NonElectronic, Unverified. Defaults to "NonElectronic"
OldCanadaUTI/Issuer	Reporting- OldCanadaUTI/Issuer	The old Canada UTI is the Canada UTI of the original trade in a novation. This is the issuer part of the UTI. This information is not used for the moment
OldCanadaUTI/TradeId	Reporting- OldCanadaUTI/TradeId	The old Canada UTI is the Canada UTI of the original trade in a novation. This is the trade id part of the UTI. This information is not used for the moment
OldHkmaUTI/Issuer	Reporting- OldHkmaUTI/Issuer	The old Hkma UTI is the Hkma UTI of the original trade in a novation. This is the issuer part of the UTI. This information is not used for the moment
OldHkmaUTI/TradeId	Reporting- OldHkmaUTI/TradeId	The old Hkma UTI is the Hkma UTI of the original trade in a novation. This is the trade id part of the UTI. This information is not used for the moment
OldMasUTI/Issuer	Reporting- OldMasUTI/Issuer	The old Mas UTI is the Mas UTI of the original trade in a novation. This is the issuer part of the UTI. This information is not used for the moment
OldMasUTI/TradeId	Reporting- OldMasUTI/TradeId	The old Mas UTI is the Mas UTI of the original trade in a novation. This is the trade id part of the UTI. This information is not used for the moment
OldUSI/USIIssuer	Reporting-OldUSI/USIIssuer	The old USI (used in DSMatch) is the USI of the original trade in a novation. This is the issuer part of the USI
OldUSI/USITradeId	Reporting-OldUSI/USITradeId	The old USI (used in DSMatch) is the USI of the original trade in a novation. This is the trade id part of the USI

Value (Name of the reporting attribute)	Related trade keyword (default mapping)	Description
OldUTI/Issuer	Reporting-OldUTI/Issuer	The old UTI is the UTI of the original trade in a novation. This is the issuer part of the UTI. This information is not used for the moment
OldUTI/TradeId	Reporting-OldUTI/TradeId	The old UTI is the UTI of the original trade in a novation. This is the trade id part of the UTI. This information is not used for the moment
OriginatingCanadaUTI/Issuer	Reporting-OriginatingCanadaUTI/Issuer	The originating Canada UTI is the Canada UTI of the parent trade in case of an allocation. This is the issuer part of the UTI
OriginatingCanadaUTI/TradeId	Reporting- OriginatingCanadaUTI/TradeId	The originating Canada UTI is the Canada UTI of the parent trade in case of an allocation. This is the trade id part of the UTI
OriginatingHkmaUTI/Issuer	Reporting-OriginatingHkmaUTI/Issuer	The originating Hkma UTI is the Hkma UTI of the parent trade in case of an allocation. This is the issuer part of the UTI
OriginatingHkmaUTI/TradeId	Reporting- OriginatingHkmaUTI/TradeId	The originating Hkma UTI is the Hkma UTI of the parent trade in case of an allocation. This is the trade id part of the UTI
OriginatingMasUTI/Issuer	Reporting-OriginatingMasUTI/Issuer	The originating Mas UTI is the Mas UTI of the parent trade in case of an allocation. This is the issuer part of the UTI
OriginatingMasUTI/TradeId	Reporting- OriginatingMasUTI/TradeId	The originating Mas UTI is the Mas UTI of the parent trade in case of an allocation. This is the trade id part of the UTI
OriginatingUSI/USIIssuer	Reporting-OriginatingUSI/USIIssuer	The originating USI is the USI of the parent trade in case of an allocation. This is the issuer part of the USI
OriginatingUSI/USITradeId	Reporting-OriginatingUSI/USITradeId	The originating USI is the USI of the parent trade in case of an allocation. This is the trade id part of the USI
OriginatingUTI/Issuer	Reporting-OriginatingUTI/Issuer	The originating UTI is the UTI of the parent trade in case of an allocation. This is the issuer part of the UTI
OriginatingUTI/TradeId	Reporting-OriginatingUTI/TradeId	The originating UTI is the UTI of the parent trade in case of an allocation. This is the trade id part of the UTI
PaymentFrequencyPeriod1	Reporting-PaymentFrequencyPeriod1	Indicates a payment frequency. Used in DSMatch only.
PreConfirmation-ESMA	Reporting-PreConfirmation-ESMA	Indicates if the regulatory report should be sent before (true) or after (false) confirmation. Defaulted to false. Used in DSMatch only.
PreConfirmation-FCA	Reporting-PreConfirmation-FCA	Indicates if the regulatory report should be sent before (true) or after (false) confirmation. Defaulted to false. Used in DSMatch only.
PriceForming	Reporting-PriceForming	Indicates whether the submission is price forming and real time regulatory submission has been submitted. Used in DSMatch only.
PriceNotationPrice1	Reporting-PriceNotationPrice1	Must contain a decimal value having 0 to 8 decimal places. Used in DSMatch only
PriceNotationPriceType1	Reporting-PriceNotationPriceType1	Provides the unit type of the PriceNotationPrice1. Used in DSMatch only Valid values: BasisPoint, Percentage, Price, UpfrontPoints. Defaults to Percentage.
PrimaryAssetClass	Reporting-PrimaryAssetClass	The trade asset class. Valid values: InterestRate, Credit, ForeignExchange, Commodity, Equity

Value (Name of the reporting attribute)	Related trade keyword (default mapping)	Description
ProcessingOrg-Beneficiary	Reporting-ProcessingOrg-Beneficiary	Specifies the id of the subject to the rights and obligations arising from the trade on the processing org side
ProcessingOrg-BranchLocation	Reporting-ProcessingOrg-BranchLocation	In the case of a trade entered by the overseas branch of the processing org, provide the country of the overseas branch
ProcessingOrg-Collateralized	Reporting-ProcessingOrg-Collateralized	Specifies the collateralization on the trade on the Processing Org side Valid values: Uncollateralized, Partially, OneWay, Fully
ProcessingOrg-CollateralPortfolioCode	Reporting-ProcessingOrg-CollateralPortfolioCode	If the processing org collateral is reported on a portfolio basis, the portfolio should be identified by a unique code
ProcessingOrg-CommercialActivity	Reporting-ProcessingOrg-CommercialActivity	Information on whether the contract is objectively measurable as directly linked to the processing org commercial or treasury financing activity. EMIR only. Valid values: true, false. Defaults to false
ProcessingOrg-ExecutionAgent	Reporting-ProcessingOrg-ExecutionAgent	Legal Entity Id of execution agent (Asset Manager) for the Processing Organization.
ProcessingOrg-SettlementAgent	Reporting-ProcessingOrg-SettlementAgent	Legal Entity Id of settlement agent for the Processing Organization.
ProcessingOrg-TradingCapacity	Reporting-ProcessingOrg-TradingCapacity	Identifies whether the processing org has concluded the contract as principal on own account or as agent for the account of a client. Valid values: Principal, Agent. Defaults to Principal.
ProcessingOrgRole-ASIC	Reporting- ProcessingOrgRole-ASIC	Identifies the role of the processing org for ASIC when a trade is ASIC eligible. This attribute is set by Calypso workflow rules. Valid values: SelfSubmission, DualSubmission, AgentSubmissionSingleSided, AgentSubmissionDualSided
ProcessingOrgRole-CA.AB.ASC	Reporting-ProcessingOrgRole-CA.AB.ASC	Identifies the role of the ProcessingOrg when a trade is eligible and should be reported to the Canadian Alberta Provincial jurisdiction. This attribute is set by Calypso workflow rules. Valid values: ReportingParty, NotReportingParty, BothReport
ProcessingOrgRole-CA.BC.BCSC	Reporting-ProcessingOrgRole-CA.BC.BCSC	Identifies the role of the ProcessingOrg when a trade is eligible and should be reported to the Canadian British Columbia Provincial jurisdiction. This attribute is set by Calypso workflow rules. Valid values: ReportingParty, NotReportingParty, BothReport
ProcessingOrgRole-CA.MB.MSC	Reporting-ProcessingOrgRole-CA.MB.MSC	Identifies the role of the ProcessingOrg when a trade is eligible and should be reported to the Canadian Manitoba Provincial jurisdiction. This attribute is set by Calypso workflow rules. Valid values: ReportingParty, NotReportingParty, BothReport
ProcessingOrgRole-CA.NB.FCSC	Reporting-ProcessingOrgRole-CA.NB.FCSC	Identifies the role of the ProcessingOrg when a trade is eligible and should be reported to the Canadian New Brunswick Provincial jurisdiction. This attribute is set by Calypso workflow rules. Valid values: ReportingParty, NotReportingParty, BothReport
ProcessingOrgRole-CA.NL.DSS	Reporting-ProcessingOrgRole-CA.NL.DSS	Identifies the role of the ProcessingOrg when a trade is eligible and should be reported to the Canadian Newfoundland and Labrador Provincial jurisdiction. This attribute is set by Calypso workflow rules. Valid values: ReportingParty, NotReportingParty, BothReport
ProcessingOrgRole-CA.NS.NSSC	Reporting-ProcessingOrgRole-CA.NS.NSSC	Identifies the role of the ProcessingOrg when a trade is eligible and should be reported to the Canadian Nova Scotia Provincial jurisdiction. This attribute is set by Calypso workflow rules. Valid values: ReportingParty, NotReportingParty, BothReport
ProcessingOrgRole-CA.NT.NTSO	Reporting-ProcessingOrgRole-CA.NT.NTSO	Identifies the role of the ProcessingOrg when a trade is eligible and should be reported to the Canadian Northwest Provincial jurisdiction. This attribute is set by Calypso workflow rules. Valid values: ReportingParty, NotReportingParty, BothReport



Value (Name of the reporting attribute)	Related trade keyword (default mapping)	Description
ProcessingOrgRole-CA.NU.NSO	Reporting-ProcessingOrgRole-CA.NU.NSO	Identifies the role of the ProcessingOrg when a trade is eligible and should be reported to the Canadian Nunavut Provincial jurisdiction. This attribute is set by Calypso workflow rules. Valid values: ReportingParty, NotReportingParty, BothReport
ProcessingOrgRole-CA.ON.OSC	Reporting-ProcessingOrgRole-CA.ON.OSC	Identifies the role of the ProcessingOrg when a trade is eligible and should be reported to the Canadian Ontario Provincial jurisdiction. This attribute is set by Calypso workflow rules. Valid values: ReportingParty, NotReportingParty, BothReport
ProcessingOrgRole-CA.PEI.OSS	Reporting-ProcessingOrgRole-CA.PEI.OSS	Identifies the role of the ProcessingOrg when a trade is eligible and should be reported to the Canadian Prince Edward Island Provincial jurisdiction. This attribute is set by Calypso workflow rules. Valid values: ReportingParty, NotReportingParty, BothReport
ProcessingOrgRole-CA.QC.AMF	Reporting-ProcessingOrgRole-CA.QC.AMF	Identifies the role of the ProcessingOrg when a trade is eligible and should be reported to the Canadian Quebec Provincial jurisdiction. This attribute is set by Calypso workflow rules. Valid values: ReportingParty, NotReportingParty, BothReport
ProcessingOrgRole-CA.SK.FCAA	Reporting-ProcessingOrgRole-CA.SK.FCAA	Identifies the role of the ProcessingOrg when a trade is eligible and should be reported to the Canadian Saskatchewan Provincial jurisdiction. This attribute is set by Calypso workflow rules. Valid values: ReportingParty, NotReportingParty, BothReport
ProcessingOrgRole-CA.YT.OSS	Reporting-ProcessingOrgRole-CA.YT.OSS	Identifies the role of the ProcessingOrg when a trade is eligible and should be reported to the Canadian Yukon Provincial jurisdiction. This attribute is set by Calypso workflow rules. Valid values: ReportingParty, NotReportingParty, BothReport
ProcessingOrgRole-CFTC	Reporting- ProcessingOrgRole-CFTC	Identifies the role of the processing org for CFTC when a trade is Dodd-Frank eligible and should be reported to CFTC. This attributes is set by Calypso workflow rules. Valid values: ReportingParty, NotReportingParty
ProcessingOrgRole-ESMA	Reporting- ProcessingOrgRole-ESMA	Identifies the role of the processing org for ESMA when a trade is EMIR eligible. This attribute is set by Calypso workflow rules. Valid values: SelfSubmission, DualSubmission, AgentSubmissionSingleSided, AgentSubmissionDualSided
ProcessingOrgRole-ETD-ESMA	Reporting- ProcessingOrgRole-ETD-ESMA	Identifies the role of the processing org for ESMA when a trade is EMIR eligible. This attribute is set by Calypso workflow rules. Valid values: SelfSubmission, DualSubmission
ProcessingOrgRole-FCA	Reporting- ProcessingOrgRole-FCA	Identifies the role of the processing org for FCA when a trade is FCA eligible. This attribute is applicable to only listed derivatives and is set by Calypso workflow rules. Valid values: SelfSubmission, DualSubmission, AgentSubmissionSingleSided, AgentSubmissionDualSided
ProcessingOrgRole-HKMA	Reporting- ProcessingOrgRole-HKMA	Identifies the role of the processing org for Hong Kong when a trade is eligible and should be reported to HKMA. This attributes is set by Calypso workflow rules. Valid values: SelfSubmission, DualSubmission, AgentSubmissionSingleSided, AgentSubmissionDualSided
ProcessingOrgRole-MAS	Reporting- ProcessingOrgRole-MAS	Identifies the role of the processing org for MAS when a trade is eligible and should be reported to MAS. This attributes is set by Calypso workflow rules. Valid values: SelfSubmission, DualSubmission, AgentSubmissionSingleSided, AgentSubmissionDualSided
ProcessingOrgRole-SEC	Reporting- ProcessingOrgRole-SEC	Identifies the role of the processing org for SEC when a trade is Dodd-Frank eligible and should be reported to SEC. This attributes is set by Calypso workflow rules. Valid values: ReportingParty, NotReportingParty



Value (Name of the reporting attribute)	Related trade keyword (default mapping)	Description
RelatedParty-AdditionalRepository	Reporting-RelatedParty-AdditionalRepository	Identifies the entity having the role of Additional Repository. Deprecated.
RelatedParty-Buyer	Reporting-RelatedParty-Buyer	Identifies the entity having the role of Buyer. Currently not used.
RelatedParty-Clearer	Reporting-RelatedParty-Clearer	Identifies the entity having the role of Clearer. Currently not used.
RelatedParty-ClearingBroker	Reporting-RelatedParty-ClearingBroker	Identifies the entity having the role of Clearing Broker. Currently not used.
RelatedParty-ClearingException	Reporting-RelatedParty-ClearingException	Identifies the entity for which there is a Clearing Exception. Currently not used.
RelatedParty-Counterparty	Reporting-RelatedParty-Counterparty	Identifies the entity having the role of Counterparty. Currently not used.
RelatedParty-DataSubmitter	Reporting-RelatedParty-DataSubmitter	Identifies the entity having the role of Data Submitter. Currently not used.
RelatedParty-ExecutionAgent	Reporting-RelatedParty-ExecutionAgent	Identifies the entity having the role of Execution Agent. Currently not used.
RelatedParty-ReportingParty	Reporting-RelatedParty-ReportingParty	Identifies the entity having the role of Reporting Party. Currently not used.
RelatedParty-Seller	Reporting-RelatedParty-Seller	Identifies the entity having the role of Seller. Currently not used.
RelatedParty-SettlementAgent	Reporting-RelatedParty-SettlementAgent	Identifies the entity having the role of Settlement Agent. Currently not used.
RelatedParty-SubmittedBy	Reporting-RelatedParty-SubmittedBy	Identifies the entity which submits the trade to DTCC. Currently not used.
RelatedParty-SubmittedFor	Reporting-RelatedParty-SubmittedFor	Identifies the entity on behalf of which the trade is submitted to DTCC. Currently not used.
ReportingJurisdiction-CFTC	Reporting-ReportingJurisdiction-CFTC	Composite attribute: "DoddFrank boolean" (DoddFrank true or DoddFrank false) that indicates whether the CFTC is involved or not. Should be deprecated soon
ReportingJurisdiction-None	Reporting-ReportingJurisdiction-None	Composite attribute: "DoddFrank boolean" (DoddFrank true or DoddFrank false). This is presently maintained only for backward compatibility reasons. Should be deprecated soon
ReportingParty-CFTC	Reporting-ReportingParty-CFTC	Used by Calypso to record the short name of the legal entity in charge of reporting the trade to CFTC
ReportingParty-SEC	Reporting-ReportingParty-SEC	Used by Calypso to record the short name of the legal entity in charge of reporting the trade to SEC
ReportingPartyIdentifier-CFTC	Reporting-ReportingPartyIdentifier-CFTC	Used by Calypso to record the full identifier of the legal entity in charge of reporting the trade to CFTC (obeys to format <source> <reference> eg : LEI SNZ2OJLFK8CLQOF39)
ReportingPartyIdentifier-SEC	Reporting-ReportingPartyIdentifier-SEC	Used by Calypso to record the full identifier of the legal entity in charge of reporting the trade to SEC (obeys to format <source> <reference> eg : LEI SNZ2OJLFK8CLQOF39)
ReportingResult-Confirmation-CA.AB.ASC	Reporting-ReportingResult-Confirmation-CA.AB.ASC	The result of the Confirmation reporting to Canadian Alberta Province when applicable (a related submission has been made to the supervisor and a response has been received) Valid values: SUCCESS, FAILURE

Value (Name of the reporting attribute)	Related trade keyword (default mapping)	Description
ReportingResult-Confirmation-CA.BC.BCSC	Reporting-ReportingResult-Confirmation-CA.BC.BCSC	The result of the Confirmation reporting to Canadian British Columbia Province when applicable (a related submission has been made to the supervisor and a response has been received) Valid values: SUCCESS, FAILURE
ReportingResult-Confirmation-CA.MB.MSC	Reporting-ReportingResult-Confirmation-CA.MB.MSC	The result of the Confirmation reporting to Canadian Manitoba Province when applicable (a related submission has been made to the supervisor and a response has been received) Valid values: SUCCESS, FAILURE
ReportingResult-Confirmation-CA.NB.FCSC	Reporting-ReportingResult-Confirmation-CA.NB.FCSC	The result of the Confirmation reporting to Canadian New Brunswick Province when applicable (a related submission has been made to the supervisor and a response has been received) Valid values: SUCCESS, FAILURE
ReportingResult-Confirmation-CA.NL.DSS	Reporting-ReportingResult-Confirmation-CA.NL.DSS	The result of the Confirmation reporting to Canadian Newfoundland and Labrador Province when applicable (a related submission has been made to the supervisor and a response has been received) Valid values: SUCCESS, FAILURE
ReportingResult-Confirmation-CA.NS.NSSC	Reporting-ReportingResult-Confirmation-CA.NS.NSSC	The result of the Confirmation reporting to Canadian Nova Scotia Province when applicable (a related submission has been made to the supervisor and a response has been received) Valid values: SUCCESS, FAILURE
ReportingResult-Confirmation-CA.NT.NTSO	Reporting-ReportingResult-Confirmation-CA.NT.NTSO	The result of the Confirmation reporting to Canadian Northwest Province when applicable (a related submission has been made to the supervisor and a response has been received) Valid values: SUCCESS, FAILURE
ReportingResult-Confirmation-CA.NU.NSO	Reporting-ReportingResult-Confirmation-CA.NU.NSO	The result of the Confirmation reporting to Canadian Nunavut Province when applicable (a related submission has been made to the supervisor and a response has been received) Valid values: SUCCESS, FAILURE
ReportingResult-Confirmation-CA.ON.OSC	Reporting-ReportingResult-Confirmation-CA.ON.OSC	The result of the Confirmation reporting to Canadian Ontario Province when applicable (a related submission has been made to the supervisor and a response has been received) Valid values: SUCCESS, FAILURE
ReportingResult-Confirmation-CA.PEI.OSS	Reporting-ReportingResult-Confirmation-CA.PEI.OSS	The result of the Confirmation reporting to Canadian Prince Edward Island Province when applicable (a related submission has been made to the supervisor and a response has been received) Valid values: SUCCESS, FAILURE
ReportingResult-Confirmation-CA.QC.AMF	Reporting-ReportingResult-Confirmation-CA.QC.AMF	The result of the Confirmation reporting to Canadian Quebec Province when applicable (a related submission has been made to the supervisor and a response has been received) Valid values: SUCCESS, FAILURE
ReportingResult-Confirmation-CA.SK.FCAA	Reporting-ReportingResult-Confirmation-CA.SK.FCAA	The result of the Confirmation reporting to Canadian Saskatchewan Province when applicable (a related submission has been made to the supervisor and a response has been received) Valid values: SUCCESS, FAILURE
ReportingResult-Confirmation-CA.YT.OSS	Reporting-ReportingResult-Confirmation-CA.YT.OSS	The result of the Confirmation reporting to Canadian Yukon Province when applicable (a related submission has been made to the supervisor and a response has been received) Valid values: SUCCESS, FAILURE
ReportingResult-Confirmation-CFTC	Reporting-ReportingResult-Confirmation-CFTC	The result of the Confirmation reporting to CFTC when applicable (a related submission has been made to the supervisor and a response has been received) Valid values: SUCCESS, FAILURE

Value (Name of the reporting attribute)	Related trade keyword (default mapping)	Description
ReportingResult-Confirmation-ESMA	Reporting-ReportingResult-Confirmation-ESMA	The result of the Confirmation reporting to ESMA when applicable (a related submission has been made to the supervisor and a response has been received) Valid values: SUCCESS, FAILURE
ReportingResult-Confirmation-HKMA	Reporting-ReportingResult-Confirmation-HKMA	The result of the Confirmation reporting to HKMA when applicable (a related submission has been made to the supervisor and a response has been received) Valid values: SUCCESS, FAILURE
ReportingResult-Confirmation-MAS	Reporting-ReportingResult-Confirmation-MAS	The result of the Confirmation reporting to MAS when applicable (a related submission has been made to the supervisor and a response has been received) Valid values: SUCCESS, FAILURE
ReportingResult-Confirmation-SEC	Reporting-ReportingResult-Confirmation-SEC	The result of the Confirmation reporting to SEC when applicable (a related submission has been made to the supervisor and a response has been received) Valid values: SUCCESS, FAILURE
ReportingResult-PET-CA.AB.ASC	Reporting-ReportingResult-PET-CA.AB.ASC	The result of the PET reporting to Canadian Alberta Province when applicable (a related submission has been made to the supervisor and a response has been received) Valid values: SUCCESS, FAILURE
ReportingResult-PET-CA.BC.BCSC	Reporting-ReportingResult-PET-CA.BC.BCSC	The result of the PET reporting to Canadian British Columbia Province when applicable (a related submission has been made to the supervisor and a response has been received) Valid values: SUCCESS, FAILURE
ReportingResult-PET-CA.MB.MSC	Reporting-ReportingResult-PET-CA.MB.MSC	The result of the PET reporting to Canadian Manitoba Province when applicable (a related submission has been made to the supervisor and a response has been received) Valid values: SUCCESS, FAILURE
ReportingResult-PET-CA.NB.FCSC	Reporting-ReportingResult-PET-CA.NB.FCSC	The result of the PET reporting to Canadian New Brunswick Province when applicable (a related submission has been made to the supervisor and a response has been received) Valid values: SUCCESS, FAILURE
ReportingResult-PET-CA.NL.DSS	Reporting-ReportingResult-PET-CA.NL.DSS	The result of the PET reporting to Canadian Newfoundland and Labrador Province when applicable (a related submission has been made to the supervisor and a response has been received) Valid values: SUCCESS, FAILURE
ReportingResult-PET-CA.NS.NSSC	Reporting-ReportingResult-PET-CA.NS.NSSC	The result of the PET reporting to Canadian Nova Scotia Province when applicable (a related submission has been made to the supervisor and a response has been received) Valid values: SUCCESS, FAILURE
ReportingResult-PET-CA.NT.NTSO	Reporting-ReportingResult-PET-CA.NT.NTSO	The result of the PET reporting to Canadian Northwest Province when applicable (a related submission has been made to the supervisor and a response has been received) Valid values: SUCCESS, FAILURE
ReportingResult-PET-CA.NU.NSO	Reporting-ReportingResult-PET-CA.NU.NSO	The result of the PET reporting to Canadian Nunavut Province when applicable (a related submission has been made to the supervisor and a response has been received) Valid values: SUCCESS, FAILURE
ReportingResult-PET-CA.ON.OSC	Reporting-ReportingResult-PET-CA.ON.OSC	The result of the PET reporting to Canadian Ontario Province when applicable (a related submission has been made to the supervisor and a response has been received) Valid values: SUCCESS, FAILURE
ReportingResult-PET-CA.PEI.OSS	Reporting-ReportingResult-PET-CA.PEI.OSS	The result of the PET reporting to Canadian Prince Edward Island Province when applicable (a related submission has been made to the supervisor and a response has been received) Valid values: SUCCESS, FAILURE

Value (Name of the reporting attribute)	Related trade keyword (default mapping)	Description
ReportingResult-PET-CA.QC.AMF	Reporting-ReportingResult-PET-CA.QC.AMF	The result of the PET reporting to Canadian Quebec Province when applicable (a related submission has been made to the supervisor and a response has been received) Valid values: SUCCESS, FAILURE
ReportingResult-PET-CA.SK.FCAA	Reporting-ReportingResult-PET-CA.SK.FCAA	The result of the PET reporting to Canadian Saskatchewan Province when applicable (a related submission has been made to the supervisor and a response has been received) Valid values: SUCCESS, FAILURE
ReportingResult-PET-CA.YT.OSS	Reporting-ReportingResult-PET-CA.YT.OSS	The result of the PET reporting to Canadian Yukon Province when applicable (a related submission has been made to the supervisor and a response has been received) Valid values: SUCCESS, FAILURE
ReportingResult-PET-CFTC	Reporting-ReportingResult-PET-CFTC	The result of the PET reporting to CFTC when applicable (a related submission has been made to the supervisor and a response has been received) Valid values: SUCCESS, FAILURE
ReportingResult-PET-ESMA	Reporting-ReportingResult-PET-ESMA	The result of the PET reporting to ESMA when applicable (a related submission has been made to the supervisor and a response has been received) Valid values: SUCCESS, FAILURE
ReportingResult-PET-HKMA	Reporting-ReportingResult-PET-HKMA	The result of the PET reporting to HKMA when applicable (a related submission has been made to the supervisor and a response has been received) Valid values: SUCCESS, FAILURE
ReportingResult-PET-MAS	Reporting-ReportingResult-PET-MAS	The result of the PET reporting to MAS when applicable (a related submission has been made to the supervisor and a response has been received) Valid values: SUCCESS, FAILURE
ReportingResult-PET-SEC	Reporting-ReportingResult-PET-SEC	The result of the PET reporting to SEC when applicable (a related submission has been made to the supervisor and a response has been received) Valid values: SUCCESS, FAILURE
ReportingResult-RealTime-CA.AB.ASC	Reporting-ReportingResult-RealTime-CA.AB.ASC	The result of the RealTime reporting to Canadian Alberta Province when applicable (a related submission has been made to the supervisor and a response has been received) Valid values: SUCCESS, FAILURE
ReportingResult-RealTime-CA.BC.BCSC	Reporting-ReportingResult-RealTime-CA.BC.BCSC	The result of the RealTime reporting to Canadian British Columbia Province when applicable (a related submission has been made to the supervisor and a response has been received) Valid values: SUCCESS, FAILURE
ReportingResult-RealTime-CA.MB.MSC	Reporting-ReportingResult-RealTime-CA.MB.MSC	The result of the RealTime reporting to Canadian Manitoba Province when applicable (a related submission has been made to the supervisor and a response has been received) Valid values: SUCCESS, FAILURE
ReportingResult-RealTime-CA.NB.FCSC	Reporting-ReportingResult-RealTime-CA.NB.FCSC	The result of the RealTime reporting to Canadian New Brunswick Province when applicable (a related submission has been made to the supervisor and a response has been received) Valid values: SUCCESS, FAILURE
ReportingResult-RealTime-CA.NL.DSS	Reporting-ReportingResult-RealTime-CA.NL.DSS	The result of the RealTime reporting to Canadian Newfoundland and Labrador Province when applicable (a related submission has been made to the supervisor and a response has been received) Valid values: SUCCESS, FAILURE
ReportingResult-RealTime-CA.NS.NSSC	Reporting-ReportingResult-RealTime-CA.NS.NSSC	The result of the RealTime reporting to Canadian Nova Scotia Province when applicable (a related submission has been made to the supervisor and a response has been received) Valid values: SUCCESS, FAILURE

Value (Name of the reporting attribute)	Related trade keyword (default mapping)	Description
ReportingResult-RealTime-CA.NT.NTSO	Reporting-ReportingResult-RealTime-CA.NT.NTSO	The result of the RealTime reporting to Canadian Northwest Province when applicable (a related submission has been made to the supervisor and a response has been received) Valid values: SUCCESS, FAILURE
ReportingResult-RealTime-CA.NU.NSO	Reporting-ReportingResult-RealTime-CA.NU.NSO	The result of the RealTime reporting to Canadian Nunavut Province when applicable (a related submission has been made to the supervisor and a response has been received) Valid values: SUCCESS, FAILURE
ReportingResult-RealTime-CA.ON.OSC	Reporting-ReportingResult-RealTime-CA.ON.OSC	The result of the RealTime reporting to Canadian Ontario Province when applicable (a related submission has been made to the supervisor and response has been received) Valid values: SUCCESS, FAILURE
ReportingResult-RealTime-CA.PEI.OSS	Reporting-ReportingResult-RealTime-CA.PEI.OSS	The result of the RealTime reporting to Canadian Prince Edward Island Province when applicable (a related submission has been made to the supervisor and a response has been received) Valid values: SUCCESS, FAILURE
ReportingResult-RealTime-CA.QC.AMF	Reporting-ReportingResult-RealTime-CA.QC.AMF	The result of the RealTime reporting to Canadian Quebec Province when applicable (a related submission has been made to the supervisor and response has been received) Valid values: SUCCESS, FAILURE
ReportingResult-RealTime-CA.SK.FCAA	Reporting-ReportingResult-RealTime-CA.SK.FCAA	The result of the RealTime reporting to Canadian Saskatchewan Province when applicable (a related submission has been made to the supervisor and a response has been received) Valid values: SUCCESS, FAILURE
ReportingResult-RealTime-CA.YT.OSS	Reporting-ReportingResult-RealTime-CA.YT.OSS	The result of the RealTime reporting to Canadian Yukon Province when applicable (a related submission has been made to the supervisor and a response has been received) Valid values: SUCCESS, FAILURE
ReportingResult-RealTime-CFTC	Reporting-ReportingResult-RealTime-CFTC	The result of the RealTime reporting to CFTC when applicable (a related submission has been made to the supervisor and a response has been received) Valid values: SUCCESS, FAILURE
ReportingResult-RealTime-ESMA	Reporting-ReportingResult-RealTime-ESMA	The result of the RealTime reporting to ESMA when applicable (a related submission has been made to the supervisor and a response has been received) Valid values: SUCCESS, FAILURE
ReportingResult-RealTime-HKMA	Reporting-ReportingResult-RealTime-HKMA	The result of the RealTime reporting to HKMA when applicable (a related submission has been made to the supervisor and a response has been received) Valid values: SUCCESS, FAILURE
ReportingResult-RealTime-MAS	Reporting-ReportingResult-RealTime-MAS	The result of the RealTime reporting to MAS when applicable (a related submission has been made to the supervisor and a response has been received) Valid values: SUCCESS, FAILURE
ReportingResult-RealTime-SEC	Reporting-ReportingResult-RealTime-SEC	The result of the RealTime reporting to SEC when applicable (a related submission has been made to the supervisor and a response has been received) Valid values: SUCCESS, FAILURE
ReportingResult- Snapshot - CA.AB.ASC	Reporting-ReportingResult- Snapshot - CA.AB.ASC	The result of the Snapshot reporting to Canadian Alberta Province when applicable (a related submission has been made to the supervisor and a response has been received) Valid values: SUCCESS, FAILURE
ReportingResult- Snapshot - CA.BC.BCSC	Reporting-ReportingResult- Snapshot - CA.BC.BCSC	The result of the Snapshot reporting to Canadian British Columbia Province when applicable (a related submission has been made to the supervisor and a response has been received) Valid values: SUCCESS, FAILURE

Value (Name of the reporting attribute)	Related trade keyword (default mapping)	Description
ReportingResult-Snapshot-CA.MB.MSC	Reporting-ReportingResult-Snapshot-CA.MB.MSC	The result of the Snapshot reporting to Canadian Manitoba Province when applicable (a related submission has been made to the supervisor and a response has been received) Valid values: SUCCESS, FAILURE
ReportingResult- Snapshot - CA.NB.FCSC	Reporting-ReportingResult- Snapshot - CA.NB.FCSC	The result of the Snapshot reporting to Canadian New Brunswick Province when applicable (a related submission has been made to the supervisor and a response has been received) Valid values: SUCCESS, FAILURE
ReportingResult- Snapshot - CA.NL.DSS	Reporting-ReportingResult- Snapshot - CA.NL.DSS	The result of the Snapshot reporting to Canadian Newfoundland and Labrador Province when applicable (a related submission has been made to the supervisor and a response has been received) Valid values: SUCCESS, FAILURE
ReportingResult- Snapshot - CA.NS.NSSC	Reporting-ReportingResult- Snapshot - CA.NS.NSSC	The result of the Snapshot reporting to Canadian Nova Scotia Province when applicable (a related submission has been made to the supervisor and a response has been received) Valid values: SUCCESS, FAILURE
ReportingResult- Snapshot - CA.NT.NTSO	Reporting-ReportingResult- Snapshot - CA.NT.NTSO	The result of the Snapshot reporting to Canadian Northwest Province when applicable (a related submission has been made to the supervisor and a response has been received) Valid values: SUCCESS, FAILURE
ReportingResult- Snapshot - CA.NU.NSO	Reporting-ReportingResult- Snapshot - CA.NU.NSO	The result of the Snapshot reporting to Canadian Nunavut Province when applicable (a related submission has been made to the supervisor and a response has been received) Valid values: SUCCESS, FAILURE
ReportingResult-Snapshot-CA.ON.OSC	Reporting-ReportingResult-Snapshot-CA.ON.OSC	The result of the Snapshot reporting to Canadian Ontario Province when applicable (a related submission has been made to the supervisor and a response has been received) Valid values: SUCCESS, FAILURE
ReportingResult- Snapshot - CA.PEI.OSS	Reporting-ReportingResult- Snapshot - CA.PEI.OSS	The result of the Snapshot reporting to Canadian Prince Edward Island Province when applicable (a related submission has been made to the supervisor and a response has been received) Valid values: SUCCESS, FAILURE
ReportingResult-Snapshot-CA.QC.AMF	Reporting-ReportingResult-Snapshot-CA.QC.AMF	The result of the Snapshot reporting to Canadian Quebec Province when applicable (a related submission has been made to the supervisor and a response has been received) Valid values: SUCCESS, FAILURE
ReportingResult- Snapshot - CA.SK.FCAA	Reporting-ReportingResult- Snapshot - CA.SK.FCAA	The result of the Snapshot reporting to Canadian Saskatchewan Province when applicable (a related submission has been made to the supervisor and a response has been received) Valid values: SUCCESS, FAILURE
ReportingResult- Snapshot - CA.YT.OSS	Reporting-ReportingResult- Snapshot - CA.YT.OSS	The result of the Snapshot reporting to Canadian Yukon Province when applicable (a related submission has been made to the supervisor and a response has been received) Valid values: SUCCESS, FAILURE
ReportingResult-Snapshot-CFTC	Reporting-ReportingResult-Snapshot-CFTC	The result of the Snapshot reporting to CFTC when applicable (a related submission has been made to the supervisor and a response has been received) Valid values: SUCCESS, FAILURE
ReportingResult-Snapshot-ESMA	Reporting-ReportingResult-Snapshot-ESMA	The result of the Snapshot reporting to ESMA when applicable (a related submission has been made to the supervisor and a response has been received) Valid values: SUCCESS, FAILURE
ReportingResult-Snapshot-HKMA	Reporting-ReportingResult-Snapshot-HKMA	The result of the Snapshot reporting to HKMA when applicable (a related submission has been made to the supervisor and a response has been received)

Value (Name of the reporting attribute)	Related trade keyword (default mapping)	Description
		Valid values: SUCCESS, FAILURE
ReportingResult-Snapshot-MAS	Reporting-ReportingResult-Snapshot-MAS	The result of the Snapshot reporting to MAS when applicable (a related submission has been made to the supervisor and a response has been received) Valid values: SUCCESS, FAILURE
ReportingResult-Snapshot-SEC	Reporting-ReportingResult-Snapshot-SEC	The result of the Snapshot reporting to SEC when applicable (a related submission has been made to the supervisor and a response has been received) Valid values: SUCCESS, FAILURE
ReportingState-Confirmation	TradeKeyword.Reporting-ReportingState-Confirmation	The state of the Confirmation reporting (obeys to the format <status> <submission_timestamp> <response_timestamp> eg: Delivered 2013-12-02T11:50:14Z 2013-12-02T11:50:19Z)
ReportingState-PET	TradeKeyword.Reporting-ReportingState-PET	The state of the PET reporting (obeys to the format <status> <submission_timestamp> <response_timestamp> eg: Delivered 2013-12-02T11:50:14Z 2013-12-02T11:50:19Z)
ReportingState-RealTime	TradeKeyword.Reporting-ReportingState-RealTime	The state of the RealTime reporting (obeys to the format <status> <submission_timestamp> <response_timestamp> eg: Delivered 2013-12-02T11:50:14Z 2013-12-02T11:50:19Z)
ReportingState-Snapshot	TradeKeyword.Reporting-ReportingState-Snapshot	The state of the Snapshot reporting (obeys to the format <status> <submission_timestamp> <response_timestamp> eg: Delivered 2013-12-02T11:50:14Z 2013-12-02T11:50:19Z)
SecondaryAssetClass	Reporting-SecondaryAssetClass	The trade secondary asset class (used for products which fall into 2 different asset classes, like precious metals which are reported with primaryAssetClass ForeignExchange and secondaryAssetClass Commodity) Valid values: InterestRate, Credit, ForeignExchange, Commodity, Equity
SubmissionState-ASIC-Confirmation	Reporting-SubmissionState-ASIC-Confirmation	The state of the confirmation submission to ASIC
SubmissionState-ASIC-PET	Reporting-SubmissionState-ASIC-PET	The state of the PET submission to ASIC
SubmissionState-ASIC-Snapshot	Reporting-SubmissionState-ASIC-Snapshot	The state of the Snapshot submission to ASIC
SubmissionState-CA. AB.ASC - Confirmation	Reporting-SubmissionState-CA.AB.ASC - Confirmation	The state of the confirmation submission to Canadian Alberta Province
SubmissionState-CA. AB.ASC - PET	Reporting-SubmissionState-CA. AB.ASC - PET	The state of the PET submission to Canadian Alberta Province
SubmissionState-CA. AB.ASC - RealTime	Reporting-SubmissionState-CA. AB.ASC - RealTime	The state of the RealTime submission to Canadian Alberta Province
SubmissionState-CA. AB.ASC - Snapshot	Reporting-SubmissionState-CA. AB.ASC - Snapshot	The state of the Snapshot submission to Canadian Alberta Province

Value (Name of the reporting attribute)	Related trade keyword (default mapping)	Description
SubmissionState-CA.BC.BCSC - Confirmation	Reporting-SubmissionState-CA. BC.BCSC -Confirmation	The state of the confirmation submission to Canadian British Columbia Province
SubmissionState-CA. BC.BCSC -PET	Reporting-SubmissionState-CA. BC.BCSC -PET	The state of the PET submission to Canadian British Columbia Province
SubmissionState-CA. BC.BCSC -RealTime	Reporting-SubmissionState-CA. BC.BCSC -RealTime	The state of the RealTime submission to Canadian British Columbia Province
SubmissionState-CA. BC.BCSC -Snapshot	Reporting-SubmissionState-CA. BC.BCSC -Snapshot	The state of the Snapshot submission to Canadian British Columbia Province
SubmissionState-CA.MB.MSC- Confirmation	Reporting-SubmissionState-CA.MB.MSC- Confirmation	The state of the confirmation submission to Canadian Manitoba Province <i>Obeys to the format &lt;submission_timestamp&gt; &lt;response_timestamp&gt; &lt;validation_code&gt;</i>
SubmissionState-CA.MB.MSC- PET	Reporting-SubmissionState-CA.MB.MSC- PET	The state of the PET submission to Canadian Manitoba Province
SubmissionState-CA.MB.MSC- RealTime	Reporting-SubmissionState-CA.MB.MSC- RealTime	The state of the RealTime submission to Canadian Manitoba Province
SubmissionState-CA.MB.MSC- Snapshot	Reporting-SubmissionState-CA.MB.MSC- Snapshot	The state of the Snapshot submission to Canadian Manitoba Province
SubmissionState-CA.NB.FCSC - Confirmation	Reporting-SubmissionState-CA.NB.FCSC - Confirmation	The state of the confirmation submission to Canadian New Brunswick Province
SubmissionState-CA.NB.FCSC - PET	Reporting-SubmissionState-CA.NB.FCSC - PET	The state of the PET submission to Canadian New Brunswick Province
SubmissionState-CA.NB.FCSC - RealTime	Reporting-SubmissionState-CA.NB.FCSC - RealTime	The state of the RealTime submission to Canadian New Brunswick Province
SubmissionState-CA.NB.FCSC - Snapshot	Reporting-SubmissionState-CA.NB.FCSC - Snapshot	The state of the Snapshot submission to Canadian New Brunswick Province
SubmissionState-CA. NL.DSS - Confirmation	Reporting-SubmissionState-CA. NL.DSS - Confirmation	The state of the confirmation submission to Canadian Newfoundland and Labrador Province
SubmissionState-CA. NL.DSS - PET	Reporting-SubmissionState-CA. NL.DSS - PET	The state of the PET submission to Canadian Newfoundland and Labrador Province
SubmissionState-CA. NL.DSS - RealTime	Reporting-SubmissionState-CA. NL.DSS - RealTime	The state of the RealTime submission to Canadian Newfoundland and Labrador Province



Value (Name of the reporting attribute)	Related trade keyword (default mapping)	Description
SubmissionState-CA.NL.DSS - Snapshot	Reporting-SubmissionState-CA. NL.DSS - Snapshot	The state of the Snapshot submission to Canadian Newfoundland and Labrador Province
SubmissionState-CA. NS.NSSC -Confirmation	Reporting-SubmissionState-CA.NS.NSSC -Confirmation	The state of the confirmation submission to Canadian Nova Scotia Province
SubmissionState-CA. NS.NSSC -PET	Reporting-SubmissionState-CA. NS.NSSC -PET	The state of the PET submission to Canadian Nova Scotia Province
SubmissionState-CA. NS.NSSC -RealTime	Reporting-SubmissionState-CA. NS.NSSC -RealTime	The state of the RealTime submission to Canadian Nova Scotia Province
SubmissionState-CA. NS.NSSC -Snapshot	Reporting-SubmissionState-CA. NS.NSSC -Snapshot	The state of the Snapshot submission to Canadian Nova Scotia Province
SubmissionState-CA. NT.NSO - Confirmation	Reporting-SubmissionState-CA. NT.NSO - Confirmation	The state of the confirmation submission to Canadian Northwest Province
SubmissionState-CA. NT.NSO - PET	Reporting-SubmissionState-CA. NT.NSO - PET	The state of the PET submission to Canadian Northwest Province
SubmissionState-CA. NT.NSO - RealTime	Reporting-SubmissionState-CA. NT.NSO - RealTime	The state of the RealTime submission to Canadian Northwest Province
SubmissionState-CA.NT.NSO - Snapshot	Reporting-SubmissionState-CA. NT.NSO - Snapshot	The state of the Snapshot submission to Canadian Northwest Province
SubmissionState-CA. NU.NSO - Confirmation	Reporting-SubmissionState-CA. NU.NSO - Confirmation	The state of the confirmation submission to Canadian Nunavut Province
SubmissionState-CA. NU.NSO - PET	Reporting-SubmissionState-CA. NU.NSO - PET	The state of the PET submission to Canadian Nunavut Province
SubmissionState-CA. NU.NSO - RealTime	Reporting-SubmissionState-CA. NU.NSO - RealTime	The state of the RealTime submission to Canadian Nunavut Province
SubmissionState-CA. NU.NSO - Snapshot	Reporting-SubmissionState-CA.NU.NSO - Snapshot	The state of the Snapshot submission to Canadian Nunavut Province
SubmissionState-CA.ON.OSC- Confirmation	Reporting-SubmissionState-CA.ON.OSC- Confirmation	The state of the confirmation submission to Canadian Ontario Province
SubmissionState-CA.ON.OSC- PET	Reporting-SubmissionState-CA.ON.OSC- PET	The state of the PET submission to Canadian Ontario Province

Value (Name of the reporting attribute)	Related trade keyword (default mapping)	Description
SubmissionState-CA.ON.OSC-RealTime	Reporting-SubmissionState-CA.ON.OSC-RealTime	The state of the RealTime submission to Canadian Ontario Province
SubmissionState-CA.ON.OSC-Snapshot	Reporting-SubmissionState-CA.ON.OSC-Snapshot	The state of the Snapshot submission to Canadian Ontario Province
SubmissionState-CA. PEI.OSS - Confirmation	Reporting-SubmissionState-CA. PEI.OSS - Confirmation	The state of the confirmation submission to Canadian Prince Edward Island Province
SubmissionState-CA.QC.AMF-Confirmation	Reporting-SubmissionState-CA.QC.AMF-Confirmation	The state of the confirmation submission to Canadian Québec Province
SubmissionState-CA.QC.AMF-PET	Reporting-SubmissionState-CA.QC.AMF-PET	The state of the PET submission to Canadian Québec Province
SubmissionState-CA.QC.AMF-RealTime	Reporting-SubmissionState-CA.QC.AMF-RealTime	The state of the RealTime submission to Canadian Québec Province
SubmissionState-CA.QC.AMF-Snapshot	Reporting-SubmissionState-CA.QC.AMF-Snapshot	The state of the Snapshot submission to Canadian Québec Province
SubmissionState-CA. PEI.OSS - PET	Reporting-SubmissionState-CA. PEI.OSS - PET	The state of the PET submission to Canadian Prince Edward Island Province
SubmissionState-CA. PEI.OSS - RealTime	Reporting-SubmissionState-CA. PEI.OSS - RealTime	The state of the RealTime submission to Canadian Prince Edward Island Province
SubmissionState-CA. PEI.OSS - Snapshot	Reporting-SubmissionState-CA. PEI.OSS - Snapshot	The state of the Snapshot submission to Canadian Prince Edward Island Province
SubmissionState- CA.SK.FCAA -Confirmation	Reporting-SubmissionState- CA.SK.FCAA-Confirmation	The state of the confirmation submission to Canadian Saskatchewan Province
SubmissionState- CA.SK.FCAA -PET	Reporting-SubmissionState- CA.SK.FCAA -PET	The state of the PET submission to Canadian Saskatchewan Province
SubmissionState- CA.SK.FCAA -RealTime	Reporting-SubmissionState- CA.SK.FCAA -RealTime	The state of the RealTime submission to Canadian Saskatchewan Province
SubmissionState- CA.SK.FCAA -Snapshot	Reporting-SubmissionState-CA.SK.FCAA -Snapshot	The state of the Snapshot submission to Canadian Saskatchewan Province
SubmissionState- CA.YT.OSS - Confirmation	Reporting-SubmissionState- CA.YT.OSS - Confirmation	The state of the confirmation submission to Canadian Yukon Province

Value (Name of the reporting attribute)	Related trade keyword (default mapping)	Description
SubmissionState- CA.YT.OSS - PET	Reporting-SubmissionState- CA.YT.OSS - PET	The state of the PET submission to Canadian Yukon Province
SubmissionState- CA.YT.OSS - RealTime	Reporting-SubmissionState- CA.YT.OSS - RealTime	The state of the RealTime submission to Canadian Yukon Province
SubmissionState-CA.YT.OSS - Snapshot	Reporting-SubmissionState-CA.YT.OSS - Snapshot	The state of the Snapshot submission to Canadian Yukon Province
SubmissionState-CFTC-Confirmation	Reporting-SubmissionState-CFTC-Confirmation	The state of the confirmation submission to CFTC
SubmissionState-CFTC-PET	Reporting-SubmissionState-CFTC-PET	The state of the PET submission to CFTC
SubmissionState-CFTC-RealTime	Reporting-SubmissionState-CFTC-RealTime	The state of the RealTime submission to CFTC
SubmissionState-CFTC-Snapshot	Reporting-SubmissionState-CFTC-Snapshot	The state of the Snapshot submission to CFTC
SubmissionState-ESMA-Confirmation	Reporting-SubmissionState-ESMA-Confirmation	The state of the confirmation submission to ESMA
SubmissionState-ESMA-PET	Reporting-SubmissionState-ESMA-PET	The state of the PET submission to ESMA
SubmissionState-ESMA-RealTime	Reporting-SubmissionState-ESMA-RealTime	The state of the RealTime submission to ESMA
SubmissionState-ESMA-Snapshot	Reporting-SubmissionState-ESMA-Snapshot	The state of the Snapshot submission to ESMA
SubmissionState-FCA-PET	Reporting-SubmissionState-FCA-PET	The state of the PET submission to FCA
SubmissionState-FCA-Confirmation	Reporting-SubmissionState-FCA-Confirmation	The state of the Confirmation submission to FCA
SubmissionState-FCA-Snapshot	Reporting-SubmissionState-FCA-Snapshot	The state of the Snapshot submission to FCA
SubmissionState-HKMA-Confirmation	Reporting-SubmissionState-HKMA-Confirmation	The state of the confirmation submission to HKMA

Value (Name of the reporting attribute)	Related trade keyword (default mapping)	Description
SubmissionState-HKMA-PET	Reporting-SubmissionState-HKMA-PET	The state of the PET submission to HKMA
SubmissionState-HKMA-RealTime	Reporting-SubmissionState-HKMA-RealTime	The state of the RealTime submission to HKMA
SubmissionState-HKMA-Snapshot	Reporting-SubmissionState-HKMA-Snapshot	The state of the Snapshot submission to HKMA
SubmissionState-MAS-Confirmation	Reporting-SubmissionState-MAS-Confirmation	The state of the confirmation submission to MAS
SubmissionState-MAS-PET	Reporting-SubmissionState-MAS-PET	The state of the PET submission to MAS
SubmissionState-MAS-RealTime	Reporting-SubmissionState-MAS-RealTime	The state of the RealTime submission to MAS
SubmissionState-MAS-Snapshot	Reporting-SubmissionState-MAS-Snapshot	The state of the Snapshot submission to MAS
SubmissionState-SEC-Confirmation	Reporting-SubmissionState-SEC-Confirmation	The state of the confirmation submission to SEC
SubmissionState-SEC-PET	Reporting-SubmissionState-SEC-PET	The state of the PET submission to SEC
SubmissionState-SEC-RealTime	Reporting-SubmissionState-SEC-RealTime	The state of the RealTime submission to SEC
SubmissionState-SEC-Snapshot	Reporting-SubmissionState-SEC-Snapshot	The state of the Snapshot submission to SEC
TerminatedByCompression	Reporting-TerminatedByCompression	Indicates if the termination of this old trade was due to a compression. Valid values: true, false
UnderlyingAsset	Reporting-UnderlyingAsset	For Credit Derivative only. The related reference obligation. Used in DSMatch (see ReportingFields/UnderlyingAsset)
UnderlyingCodeType	Reporting-UnderlyingCodeType	For Credit Derivative only. The code type of related reference obligation. Used in DSMatch only. Could be deprecated.
UniqueTradeId-FarLeg	Reporting-UniqueTradeId-FarLeg	Used for FX Swaps to store the UTI or USI TradeId of the Far Leg (while the UTI of the Near Leg is stored in UTI/TradeId and the USI of the Near Leg is stored in USI/USITradeId).
UniqueTradeId-Leg2	Reporting-UniqueTradeId-Leg2	Used for Commodity Options (if the strategy is Put Spread, Call Spread, Straddle, Strangle, Risk Reversal, or Synthetic Forward) to store the UTI associated to the other leg.
UPI	Reporting-UPI	Unique Product Identifier (obeys to the format <source> <identifier>) Ex: ISDA InterestRate:IRSwap:OIS

Value (Name of the reporting attribute)	Related trade keyword (default mapping)	Description
USI/USIIssuer	Reporting-USI/USIIssuer	Issuer part (aka namespace) of the USI (Unique Swap Identifier). This issuer description obeys to the format <source> <identifier>, eg: NFA 1030000033)
USI/USITradeId	Reporting-USI/USITradeId	Trade Id part of the USI (Unique Swap Identifier)
UTI/Issuer	Reporting-UTI/Issuer	Issuer part (aka namespace) of the UTI (Unique Trade Identifier)
UTI/TradeId	Reporting-UTI/TradeId	Trade Id part of the UTI (Unique Trade Identifier)
UTIGeneratingParty	Reporting-UTIGeneratingParty	The short name of the legal entity which generates the UTI for EMIR

## 4.4 Relationship between reporting attributes and reporting tables

With the new persistence, the reporting information is not anymore recorded into trade keywords. The following sections exhibit the relationship between the new reporting tables and the reporting attributes

### 4.4.1 Reporting attributes related to table tr\_report

Reporting Attributes	Table column(s)
AdditionalPriceNotation	additional_price_notation
AdditionalPriceNotationType	additional_price_notation_type
AdditionalRepository1	additional_repository1
AdditionalRepository2	additional_repository2
AdditionalRepository3	additional_repository3
AllocationIndicator	allocation_indicator
ClearedTimestamp	clearing_timestamp
ClearingDCO	clearing_dco_b
ClearingHouse	clearing_house_id
Compression	portfolio_compression_b
ConfirmedTimestamp	confirmation_time
Counterparty-Beneficiary	cpty_beneficiary_id
Counterparty-BranchLocation	cpty_branch_location
Counterparty-Broker	cpty_broker_id
Counterparty-ClearingBroker	cpty_clearing_broker_id
Counterparty-Collateralized	cpty_collat_status_code
Counterparty-CollateralPortfolioCode	cpty_collateral_portfolio_code
Counterparty-CommercialActivity	cpty_commercial_activity_b
Counterparty-Desk	cpty_desk
Counterparty-ExecutionAgent	cpty_execution_agent_id
Counterparty-SettlementAgent	cpty_settlement_agent_id
Counterparty-Trader	cpty_trader
Counterparty-TradingCapacity	cpty_trading_capacity
ElectronicConfirmation	confirmation_indicator
ExecutionTimestamp	execution_time
ExecutionVenue	execution_venue
LargeSizeTrade	large_size_trade_b
NonStandardFlag	non_standard_b
OffPlatformVerification	off_ptf_verification_indicator
PaymentFrequencyPeriod1	payment_frequency_method
PriceForming	price_forming_b
PriceNotationPrice1	price_notation
PriceNotationPriceType1	price_notation_type
PrimaryAssetClass	primary_asset_class
ProcessingOrg-Beneficiary	po_beneficiary_id
ProcessingOrg-BranchLocation	po_branch_location
ProcessingOrg-Collateralized	po_collat_status_code
ProcessingOrg-CollateralPortfolioCode	po_collateral_portfolio_code
ProcessingOrg-CommercialActivity	po_commercial_activity_b
ProcessingOrg-ExecutionAgent	po_execution_agent_id
ProcessingOrg-SettlementAgent	po_settlement_agent_id
ProcessingOrg-TradingCapacity	po_trading_capacity
SecondaryAssetClass	secondary_asset_class
TerminatedByCompression	terminated_by_compression_b
UnderlyingAsset	underlying_asset_code
UnderlyingCodeType	underlying_asset_code_type
UPI	upi_source + ' ' + upi

## 4.4.2 Table tr\_usi\_uti reporting attributes

In the column **Conditions** below:

- regulation\_id** states for the identifier of the UTI regulation
- type** states for the type of the UTI  
(**ST**: UTI [ST for standard], **OR**: Originating UTI, **FE**: Fee UTI, **OL**: Old UTI, **BL**: Block UTI)

Reporting Attributes	Table column	Conditions	Reg.
USI/USIIssuer	issuer_reference	regulation_id = 1 and type = 'ST'	DFA
USI/USITradeId	trade_reference	regulation_id = 1 and type = 'ST'	
OriginatingUSI/USIIssuer	issuer_reference	regulation_id = 1 and type = 'OR'	
OriginatingUSI/USITradeId	trade_reference	regulation_id = 1 and type = 'OR'	
FeeUSI/USIIssuer	issuer_reference	regulation_id = 1 and type = 'FE'	
FeeUSI/USITradeId	trade_reference	regulation_id = 1 and type = 'FE'	
OldUSI/USIIssuer	issuer_reference	regulation_id = 1 and type = 'OL'	
OldUSI/USITradeId	trade_reference	regulation_id = 1 and type = 'OL'	
BlockUSI/USIIssuer	issuer_reference	regulation_id = 1 and type = 'BL'	
BlockUSI/USITradeId	trade_reference	regulation_id = 1 and type = 'BL'	EMIR
UTI/Issuer	issuer_reference	regulation_id = 2 and type = 'ST'	
UTI/TradeId	trade_reference	regulation_id = 2 and type = 'ST'	
OriginatingUTI/Issuer	issuer_reference	regulation_id = 2 and type = 'OR'	
OriginatingUTI/TradeId	trade_reference	regulation_id = 2 and type = 'OR'	
FeeUTI/Issuer	issuer_reference	regulation_id = 2 and type = 'FE'	
FeeUTI/TradeId	trade_reference	regulation_id = 2 and type = 'FE'	
OldUTI/Issuer	issuer_reference	regulation_id = 2 and type = 'OL'	
OldUTI/TradeId	trade_reference	regulation_id = 2 and type = 'OL'	
BlockUTI/Issuer	issuer_reference	regulation_id = 2 and type = 'BL'	
BlockUTI/TradeId	trade_reference	regulation_id = 2 and type = 'BL'	Canada
CanadaUTI/Issuer	issuer_reference	regulation_id = 3 and type = 'ST'	
CanadaUTI/TradeId	trade_reference	regulation_id = 3 and type = 'ST'	
OriginatingCanadaUTI/Issuer	issuer_reference	regulation_id = 3 and type = 'OR'	
OriginatingCanadaUTI/TradeId	trade_reference	regulation_id = 3 and type = 'OR'	
FeeCanadaUTI/Issuer	issuer_reference	regulation_id = 3 and type = 'FE'	
FeeCanadaUTI/TradeId	trade_reference	regulation_id = 3 and type = 'FE'	
OldCanadaUTI/Issuer	issuer_reference	regulation_id = 3 and type = 'OL'	
OldCanadaUTI/TradeId	trade_reference	regulation_id = 3 and type = 'OL'	
BlockCanadaUTI/Issuer	issuer_reference	regulation_id = 3 and type = 'BL'	MAS
BlockCanadaUTI/TradeId	trade_reference	regulation_id = 3 and type = 'BL'	
MasUTI/Issuer	issuer_reference	regulation_id = 4 and type = 'ST'	
MasUTI/TradeId	trade_reference	regulation_id = 4 and type = 'ST'	
OriginatingMasUTI/Issuer	issuer_reference	regulation_id = 4 and type = 'OR'	
OriginatingMasUTI/TradeId	trade_reference	regulation_id = 4 and type = 'OR'	
FeeMasUTI/Issuer	issuer_reference	regulation_id = 4 and type = 'FE'	
FeeMasUTI/TradeId	trade_reference	regulation_id = 4 and type = 'FE'	
OldMasUTI/Issuer	issuer_reference	regulation_id = 4 and type = 'OL'	
OldMasUTI/TradeId	trade_reference	regulation_id = 4 and type = 'OL'	HKMA
BlockMasUTI/Issuer	issuer_reference	regulation_id = 4 and type = 'BL'	
BlockMasUTI/TradeId	trade_reference	regulation_id = 4 and type = 'BL'	
HkmaUTI/Issuer	issuer_reference	regulation_id = 5 and type = 'ST'	
HkmaUTI/TradeId	trade_reference	regulation_id = 5 and type = 'ST'	
OriginatingHkmaUTI/Issuer	issuer_reference	regulation_id = 5 and type = 'OR'	
OriginatingHkmaUTI/TradeId	trade_reference	regulation_id = 5 and type = 'OR'	
FeeHkmaUTI/Issuer	issuer_reference	regulation_id = 5 and type = 'FE'	
FeeHkmaUTI/TradeId	trade_reference	regulation_id = 5 and type = 'FE'	
OldHkmaUTI/Issuer	issuer_reference	regulation_id = 5 and type = 'OL'	
OldHkmaUTI/TradeId	trade_reference	regulation_id = 5 and type = 'OL'	
BlockHkmaUTI/Issuer	issuer_reference	regulation_id = 5 and type = 'BL'	
BlockHkmaUTI/TradeId	trade_reference	regulation_id = 5 and type = 'BL'	

AsicUTI/Issuer	issuer_reference	regulation_id = 6 and type = 'ST'	ASIC
AsicUTI/TradeId	trade_reference	regulation_id = 6 and type = 'ST'	
OriginatingAsicUTI/Issuer	issuer_reference	regulation_id = 6 and type = 'OR'	
OriginatingAsicUTI/TradeId	trade_reference	regulation_id = 6 and type = 'OR'	
FeeAsicUTI/Issuer	issuer_reference	regulation_id = 6 and type = 'FE'	
FeeAsicUTI/TradeId	trade_reference	regulation_id = 6 and type = 'FE'	
OldAsicUTI/Issuer	issuer_reference	regulation_id = 6 and type = 'OL'	
OldAsicUTI/TradeId	trade_reference	regulation_id = 6 and type = 'OL'	
BlockAsicUTI/Issuer	issuer_reference	regulation_id = 6 and type = 'BL'	
BlockAsicUTI/TradeId	trade_reference	regulation_id = 6 and type = 'BL'	
FcaUTI/Issuer	issuer_reference	regulation_id = 7 and type = 'ST'	FCA
FcaUTI/TradeId	trade_reference	regulation_id = 7 and type = 'ST'	
OriginatingFcaUTI/Issuer	issuer_reference	regulation_id = 7 and type = 'OR'	
OriginatingFcaUTI/TradeId	trade_reference	regulation_id = 7 and type = 'OR'	
FeeFcaUTI/Issuer	issuer_reference	regulation_id = 7 and type = 'FE'	
FeeFcaUTI/TradeId	trade_reference	regulation_id = 7 and type = 'FE'	
OldFcaUTI/Issuer	issuer_reference	regulation_id = 7 and type = 'OL'	
OldFcaUTI/TradeId	trade_reference	regulation_id = 7 and type = 'OL'	
BlockFcaUTI/Issuer	issuer_reference	regulation_id = 7 and type = 'BL'	
BlockFcaUTI/TradeId	trade_reference	regulation_id = 7 and type = 'BL'	
UniqueTradeId-FarLeg	trade_reference	type = 'FR'	-



### 4.4.3 Table tr\_report\_regime attributes

In the column **Conditions** below:

- **supervisor\_id** states for the identifier of the regulation supervisor (CFTC, SEC, ESMA...)

Reporting Attributes	Table column	Conditions	Sup.
ProcessingOrgRole-CFTC	po_role_code	supervisor_id = 1	CFTC
ClearingMandatory-CFTC	clearing_mandatory_b	supervisor_id = 1	
MaskedCounterparty-CFTC	counterparty_masked_b	supervisor_id = 1	
ProcessingOrgRole-SEC	po_role_code	supervisor_id = 2	SEC
ClearingMandatory-SEC	clearing_mandatory_b	supervisor_id = 2	
MaskedCounterparty-SEC	counterparty_masked_b	supervisor_id = 2	
ProcessingOrgRole-ESMA	po_role_code	supervisor_id = 3	ESMA
ClearingMandatory-ESMA	clearing_mandatory_b	supervisor_id = 3	
MaskedCounterparty-ESMA	counterparty_masked_b	supervisor_id = 3	
ProcessingOrgRole-ETD-ESMA	po_role_code	supervisor_id = 3	Québec
ProcessingOrgRole-CA.QC.AMF	po_role_code	supervisor_id = 4	
ClearingMandatory-CA.QC.AMF	clearing_mandatory_b	supervisor_id = 4	
MaskedCounterparty-CA.QC.AMF	counterparty_masked_b	supervisor_id = 4	
IsProcessingOrgLocal-CA.QC.AMF	po_local_b	supervisor_id = 4	
IsCounterpartyLocal-CA.QC.AMF	cpty_local_b	supervisor_id = 4	
ProcessingOrgRole-CA.ON.OSC	po_role_code	supervisor_id = 5	Ontario
ClearingMandatory-CA.ON.OSC	clearing_mandatory_b	supervisor_id = 5	
MaskedCounterparty-CA.ON.OSC	counterparty_masked_b	supervisor_id = 5	
IsProcessingOrgLocal-CA.ON.OSC	po_local_b	supervisor_id = 5	
IsCounterpartyLocal-CA.ON.OSC	cpty_local_b	supervisor_id = 5	
ProcessingOrgRole-CA.MB.MSC	po_role_code	supervisor_id = 6	Manitoba
ClearingMandatory-CA.MB.MSC	clearing_mandatory_b	supervisor_id = 6	
MaskedCounterparty-CA.MB.MSC	counterparty_masked_b	supervisor_id = 6	
IsProcessingOrgLocal-CA.MB.MSC	po_local_b	supervisor_id = 6	
IsCounterpartyLocal-CA.MB.MSC	cpty_local_b	supervisor_id = 6	
ProcessingOrgRole-MAS	po_role_code	supervisor_id = 7	MAS
ClearingMandatory-MAS	clearing_mandatory_b	supervisor_id = 7	
MaskedCounterparty-MAS	counterparty_masked_b	supervisor_id = 7	
ProcessingOrgRole-HKMA	po_role_code	supervisor_id = 8	HKMA
ClearingMandatory-HKMA	clearing_mandatory_b	supervisor_id = 8	
MaskedCounterparty-HKMA	counterparty_masked_b	supervisor_id = 8	

ProcessingOrgRole-CA.AB.ASC	po_role_code	supervisor_id = 9	Alberta
ClearingMandatory-CA.AB.ASC	clearing_mandatory_b	supervisor_id = 9	
MaskedCounterparty-CA.AB.ASC	counterparty_masked_b	supervisor_id = 9	
IsProcessingOrgLocal-CA.AB.ASC	po_local_b	supervisor_id = 9	
IsCounterpartyLocal-CA.AB.ASC	cpty_local_b	supervisor_id = 9	
ProcessingOrgRole-CA.BC.BCSC	po_role_code	supervisor_id = 10	British Columbia
ClearingMandatory-CA.BC.BCSC	clearing_mandatory_b	supervisor_id = 10	
MaskedCounterparty-CA.BC.BCSC	counterparty_masked_b	supervisor_id = 10	
IsProcessingOrgLocal-CA.BC.BCSC	po_local_b	supervisor_id = 10	
IsCounterpartyLocal-CA.BC.BCSC	cpty_local_b	supervisor_id = 10	
ProcessingOrgRole- CA.NB.FCSC	po_role_code	supervisor_id = 11	New Brunswick
ClearingMandatory- CA.NB.FCSC	clearing_mandatory_b	supervisor_id = 11	
MaskedCounterparty- CA.NB.FCSC	counterparty_masked_b	supervisor_id = 11	
IsProcessingOrgLocal- CA.NB.FCSC	po_local_b	supervisor_id = 11	
IsCounterpartyLocal-CA.NB.FCSC	cpty_local_b	supervisor_id = 11	
ProcessingOrgRole-CA.NL.DSS	po_role_code	supervisor_id = 12	Newfoundland and Labrador
ClearingMandatory-CA.NL.DSS	clearing_mandatory_b	supervisor_id = 12	
MaskedCounterparty-CA.NL.DSS	counterparty_masked_b	supervisor_id = 12	
IsProcessingOrgLocal-CA.NL.DSS	po_local_b	supervisor_id = 12	
IsCounterpartyLocal-CA.NL.DSS	cpty_local_b	supervisor_id = 12	
ProcessingOrgRole- CA.NS.NSSC	po_role_code	supervisor_id = 13	Nova Scotia
ClearingMandatory- CA.NS.NSSC	clearing_mandatory_b	supervisor_id = 13	
MaskedCounterparty- CA.NS.NSSC	counterparty_masked_b	supervisor_id = 13	
IsProcessingOrgLocal- CA.NS.NSSC	po_local_b	supervisor_id = 13	
IsCounterpartyLocal-CA.NS.NSSC	cpty_local_b	supervisor_id = 13	
ProcessingOrgRole-CA.NT.NTSO	po_role_code	supervisor_id = 14	Northwest Territories
ClearingMandatory-CA.NT.NTSO	clearing_mandatory_b	supervisor_id = 14	
MaskedCounterparty-CA.NT.NTSO	counterparty_masked_b	supervisor_id = 14	
IsProcessingOrgLocal-CA.NT.NTSO	po_local_b	supervisor_id = 14	
IsCounterpartyLocal-CA.NT.NTSO	cpty_local_b	supervisor_id = 14	
ProcessingOrgRole- CA.NU.NSO	po_role_code	supervisor_id = 15	Nunavut
ClearingMandatory- CA.NU.NSO	clearing_mandatory_b	supervisor_id = 15	
MaskedCounterparty- CA.NU.NSO	counterparty_masked_b	supervisor_id = 15	
IsProcessingOrgLocal- CA.NU.NSO	po_local_b	supervisor_id = 15	
IsCounterpartyLocal-CA.NU.NSO	cpty_local_b	supervisor_id = 15	
ProcessingOrgRole-CA.PEI.OSS	po_role_code	supervisor_id = 16	Prince Edward Island
ClearingMandatory-CA.PEI.OSS	clearing_mandatory_b	supervisor_id = 16	
MaskedCounterparty-CA.PEI.OSS	counterparty_masked_b	supervisor_id = 16	
IsProcessingOrgLocal-CA.PEI.OSS	po_local_b	supervisor_id = 16	
IsCounterpartyLocal-CA.PEI.OSS	cpty_local_b	supervisor_id = 16	
ProcessingOrgRole- CA.SK.FCAA	po_role_code	supervisor_id = 17	Saskatchewan
ClearingMandatory- CA.SK.FCAA	clearing_mandatory_b	supervisor_id = 17	
MaskedCounterparty- CA.SK.FCAA	counterparty_masked_b	supervisor_id = 17	
IsProcessingOrgLocal- CA.SK.FCAA	po_local_b	supervisor_id = 17	
IsCounterpartyLocal-CA.SK.FCAA	cpty_local_b	supervisor_id = 17	
ProcessingOrgRole-CA.YT.OSS	po_role_code	supervisor_id = 18	Yukon
ClearingMandatory-CA. YT.OSS	clearing_mandatory_b	supervisor_id = 18	
MaskedCounterparty-CA. YT.OSS	counterparty_masked_b	supervisor_id = 18	
IsProcessingOrgLocal-CA. YT.OSS	po_local_b	supervisor_id = 18	
IsCounterpartyLocal-CA. YT.OSS	cpty_local_b	supervisor_id = 18	
ProcessingOrgRole-ASIC	po_role_code	supervisor_id = 19	ASIC
ClearingMandatory-ASIC	clearing_mandatory_b	supervisor_id = 19	
MaskedCounterparty-ASIC	counterparty_masked_b	supervisor_id = 19	
ProcessingOrgRole-FCA	po_role_code	supervisor_id = 20	FCA
ClearingMandatory-FCA	clearing_mandatory_b	supervisor_id = 20	
MaskedCounterparty-FCA	counterparty_masked_b	supervisor_id = 20	

#### 4.4.4 Table tr\_submission\_state attributes

Each attribute value is build through the following concatenation:  
**submission\_time** + '|' + **response\_time** + '|' + **validation\_code**.

Reporting Attributes	Conditions	Supervisor
SubmissionState-CFTC-RealTime	supervisor_id = 1 and purpose_code = 'RT'	CFTC
SubmissionState-CFTC-PET	supervisor_id = 1 and purpose_code = 'PT'	
SubmissionState-CFTC-Confirmation	supervisor_id = 1 and purpose_code = 'CF'	
SubmissionState-CFTC-Snapshot	supervisor_id = 1 and purpose_code = 'SF'	
SubmissionState-SEC-RealTime	supervisor_id = 2 and purpose_code = 'RT'	SEC
SubmissionState-SEC-PET	supervisor_id = 2 and purpose_code = 'PT'	
SubmissionState-SEC-Confirmation	supervisor_id = 2 and purpose_code = 'CF'	
SubmissionState-SEC-Snapshot	supervisor_id = 2 and purpose_code = 'SF'	
SubmissionState-ESMA-RealTime	supervisor_id = 3 and purpose_code = 'RT'	ESMA
SubmissionState-ESMA-PET	supervisor_id = 3 and purpose_code = 'PT'	
SubmissionState-ESMA-Confirmation	supervisor_id = 3 and purpose_code = 'CF'	
SubmissionState-ESMA-Snapshot	supervisor_id = 3 and purpose_code = 'SF'	
SubmissionState-CA.QC.AMF-RealTime	supervisor_id = 4 and purpose_code = 'RT'	Québec
SubmissionState-CA.QC.AMF-PET	supervisor_id = 4 and purpose_code = 'PT'	
SubmissionState-CA.QC.AMF-Confirmation	supervisor_id = 4 and purpose_code = 'CF'	
SubmissionState-CA.QC.AMF-Snapshot	supervisor_id = 4 and purpose_code = 'SF'	
SubmissionState-CA.ON.OSC-RealTime	supervisor_id = 5 and purpose_code = 'RT'	Ontario
SubmissionState-CA.ON.OSC-PET	supervisor_id = 5 and purpose_code = 'PT'	
SubmissionState-CA.ON.OSC-Confirmation	supervisor_id = 5 and purpose_code = 'CF'	
SubmissionState-CA.ON.OSC-Snapshot	supervisor_id = 5 and purpose_code = 'SF'	
SubmissionState-CA.MB.MSC-RealTime	supervisor_id = 6 and purpose_code = 'RT'	Manitoba
SubmissionState-CA.MB.MSC-PET	supervisor_id = 6 and purpose_code = 'PT'	
SubmissionState-CA.MB.MSC-Confirmation	supervisor_id = 6 and purpose_code = 'CF'	
SubmissionState-CA.MB.MSC-Snapshot	supervisor_id = 6 and purpose_code = 'SF'	
SubmissionState-MAS-RealTime	supervisor_id = 7 and purpose_code = 'RT'	MAS
SubmissionState-MAS-PET	supervisor_id = 7 and purpose_code = 'PT'	
SubmissionState-MAS-Confirmation	supervisor_id = 7 and purpose_code = 'CF'	
SubmissionState-MAS-Snapshot	supervisor_id = 7 and purpose_code = 'SF'	
SubmissionState-HKMA-RealTime	supervisor_id = 8 and purpose_code = 'RT'	HKMA
SubmissionState-HKMA-PET	supervisor_id = 8 and purpose_code = 'PT'	
SubmissionState-HKMA-Confirmation	supervisor_id = 8 and purpose_code = 'CF'	
SubmissionState-HKMA-Snapshot	supervisor_id = 8 and purpose_code = 'SF'	
SubmissionState-CA.AB.ASC-RealTime	supervisor_id = 9 and purpose_code = 'RT'	Alberta
SubmissionState-CA.AB.ASC-PET	supervisor_id = 9 and purpose_code = 'PT'	
SubmissionState-CA.AB.ASC-Confirmation	supervisor_id = 9 and purpose_code = 'CF'	
SubmissionState-CA.AB.ASC-Snapshot	supervisor_id = 9 and purpose_code = 'SF'	
SubmissionState-CA.BC.BCSC-RealTime	supervisor_id = 10 and purpose_code = 'RT'	British Columbia
SubmissionState-CA.BC.BCSC-PET	supervisor_id = 10 and purpose_code = 'PT'	
SubmissionState-CA.BC.BCSC-Confirmation	supervisor_id = 10 and purpose_code = 'CF'	
SubmissionState-CA.BC.BCSC-Snapshot	supervisor_id = 10 and purpose_code = 'SF'	
SubmissionState-CA.NB.FCSC-RealTime	supervisor_id = 11 and purpose_code = 'RT'	New Brunswick
SubmissionState-CA.NB.FCSC-PET	supervisor_id = 11 and purpose_code = 'PT'	
SubmissionState-CA.NB.FCSC-Confirmation	supervisor_id = 11 and purpose_code = 'CF'	
SubmissionState-CA.NB.FCSC-Snapshot	supervisor_id = 11 and purpose_code = 'SF'	
SubmissionState-CA.NL.DSS-RealTime	supervisor_id = 12 and purpose_code = 'RT'	Newfoundland and Labrador
SubmissionState-CA.NL.DSS-PET	supervisor_id = 12 and purpose_code = 'PT'	
SubmissionState-CA.NL.DSS-Confirmation	supervisor_id = 12 and purpose_code = 'CF'	
SubmissionState-CA.NL.DSS-Snapshot	supervisor_id = 12 and purpose_code = 'SF'	
SubmissionState-CA.NS.NSSC-RealTime	supervisor_id = 13 and purpose_code = 'RT'	Nova Scotia
SubmissionState-CA.NS.NSSC-PET	supervisor_id = 13 and purpose_code = 'PT'	
SubmissionState-CA.NS.NSSC-Confirmation	supervisor_id = 13 and purpose_code = 'CF'	
SubmissionState-CA.NS.NSSC-Snapshot	supervisor_id = 13 and purpose_code = 'SF'	
SubmissionState-CA.NT.NTSO-RealTime	supervisor_id = 14 and purpose_code = 'RT'	Northwest
SubmissionState-CA.NT.NTSO-PET	supervisor_id = 14 and purpose_code = 'PT'	
SubmissionState-CA.NT.NTSO-Confirmation	supervisor_id = 14 and purpose_code = 'CF'	
SubmissionState-CA.NT.NTSO-Snapshot	supervisor_id = 14 and purpose_code = 'SF'	
SubmissionState-CA.NU.NSO-RealTime	supervisor_id = 15 and purpose_code = 'RT'	Nunavut
SubmissionState-CA.NU.NSO-PET	supervisor_id = 15 and purpose_code = 'PT'	
SubmissionState-CA.NU.NSO-Confirmation	supervisor_id = 15 and purpose_code = 'CF'	
SubmissionState-CA.NU.NSO-Snapshot	supervisor_id = 15 and purpose_code = 'SF'	
SubmissionState-CA.PEI.OSS-RealTime	supervisor_id = 16 and purpose_code = 'RT'	

Reporting Attributes	Conditions	Supervisor
SubmissionState-CA.PEI.OSS-PET	supervisor_id = 16 and purpose_code = 'PT'	Prince Edward Island
SubmissionState-CA.PEI.OSS-Confirmation	supervisor_id = 16 and purpose_code = 'CF'	
SubmissionState-CA.PEI.OSS-Snapshot	supervisor_id = 16 and purpose_code = 'SF'	
SubmissionState-CA.SK.FCAA-RealTime	supervisor_id = 17 and purpose_code = 'RT'	Saskatchewan
SubmissionState-CA.SK.FCAA-PET	supervisor_id = 17 and purpose_code = 'PT'	
SubmissionState-CA.SK.FCAA-Confirmation	supervisor_id = 17 and purpose_code = 'CF'	
SubmissionState-CA.SK.FCAA-Snapshot	supervisor_id = 17 and purpose_code = 'SF'	Yukon
SubmissionState-CA.YT.OSS -RealTime	supervisor_id = 18 and purpose_code = 'RT'	
SubmissionState-CA.YT.OSS-PET	supervisor_id = 18 and purpose_code = 'PT'	
SubmissionState-CA.YT.OSS-Confirmation	supervisor_id = 18 and purpose_code = 'CF'	
SubmissionState-CA.YT.OSS-Snapshot	supervisor_id = 18 and purpose_code = 'SF'	ASIC
SubmissionState-ASIC-PET	supervisor_id = 19 and purpose_code = 'PT'	
SubmissionState-ASIC-Confirmation	supervisor_id = 19 and purpose_code = 'CF'	
SubmissionState-ASIC-Snapshot	supervisor_id = 19 and purpose_code = 'SF'	FCA
SubmissionState-FCA-PET	supervisor_id = 20 and purpose_code = 'PT'	
SubmissionState-FCA-Confirmation	supervisor_id = 20 and purpose_code = 'CF'	
SubmissionState-FCA-Snapshot	supervisor_id = 20 and purpose_code = 'SF'	